



GS COMPACT MASTER CYLINDER REBUILD KIT

This package contains the following:

- | | |
|---|---|
| <input type="checkbox"/> .50" Bore Rebuild Kit, P/N 260-14116 | <input type="checkbox"/> .75" Bore Rebuild Kit, P/N 260-14119 |
| <input type="checkbox"/> .62" Bore Rebuild Kit, P/N 260-14117 | <input type="checkbox"/> .81" Bore Rebuild Kit, P/N 260-14120 |
| <input type="checkbox"/> .70" Bore Rebuild Kit, P/N 260-14118 | |

WARNING

IT IS THE RESPONSIBILITY OF THE PERSON INSTALLING ANY BRAKE COMPONENT OR KIT TO DETERMINE THE SUITABILITY OF THE COMPONENT OR KIT FOR THAT PARTICULAR APPLICATION. IF YOU ARE NOT SURE HOW TO SAFELY USE THIS BRAKE COMPONENT OR KIT, YOU SHOULD NOT INSTALL OR USE IT. DO NOT ASSUME ANYTHING. IMPROPERLY INSTALLED OR MAINTAINED BRAKES ARE DANGEROUS. IF YOU ARE NOT SURE, GET HELP OR RETURN THE PRODUCT. YOU MAY OBTAIN ADDITIONAL INFORMATION AND TECHNICAL SUPPORT BY CALLING WILWOOD AT (805) 388-1188, OR VISIT OUR WEB SITE AT WWW.WILWOOD.COM. USE OF WILWOOD TECHNICAL SUPPORT DOES NOT GUARANTEE PROPER INSTALLATION. YOU, OR THE PERSON WHO DOES THE INSTALLATION MUST KNOW HOW TO PROPERLY USE THIS PRODUCT. IT IS NOT POSSIBLE OVER THE PHONE TO UNDERSTAND OR FORESEE ALL THE ISSUES THAT MIGHT ARISE IN YOUR INSTALLATION.

RACING EQUIPMENT AND BRAKES MUST BE MAINTAINED AND SHOULD BE CHECKED REGULARLY FOR FATIGUE, DAMAGE, AND WEAR.

General Information: Before installation of the Wilwood GS Compact Master Cylinder Rebuild Kit, it is important to check the following items to ensure a trouble-free installation:

- Make sure this is the correct kit that corresponds to the bore size of your master cylinder.
- Inspect the package contents against the parts list to ensure that all components are included.
- Read the instructions and study Figure 1 to familiarize yourself with the procedure before you begin.
- Prepare a clean work area for rebuilding the master cylinder

ITEM NO.	DESCRIPTION	QTY
1	Dust Boot	1
2	Snap Ring	1
3	Washer	1
4	Push Rod	1
5	Piston Assembly	1
6	Nut	1

4700 Calle Bolero • Camarillo, CA 93012 Phone (805) 388-1188 • Fax (805) 388-4938
DS-1153 REV DATE: 01-15-16 www.wilwood.com



GS COMPACT MASTER CYLINDER REBUILD KIT

This package contains the following:

- | | |
|---|---|
| <input type="checkbox"/> .50" Bore Rebuild Kit, P/N 260-14116 | <input type="checkbox"/> .75" Bore Rebuild Kit, P/N 260-14119 |
| <input type="checkbox"/> .62" Bore Rebuild Kit, P/N 260-14117 | <input type="checkbox"/> .81" Bore Rebuild Kit, P/N 260-14120 |
| <input type="checkbox"/> .70" Bore Rebuild Kit, P/N 260-14118 | |

WARNING

IT IS THE RESPONSIBILITY OF THE PERSON INSTALLING ANY BRAKE COMPONENT OR KIT TO DETERMINE THE SUITABILITY OF THE COMPONENT OR KIT FOR THAT PARTICULAR APPLICATION. IF YOU ARE NOT SURE HOW TO SAFELY USE THIS BRAKE COMPONENT OR KIT, YOU SHOULD NOT INSTALL OR USE IT. DO NOT ASSUME ANYTHING. IMPROPERLY INSTALLED OR MAINTAINED BRAKES ARE DANGEROUS. IF YOU ARE NOT SURE, GET HELP OR RETURN THE PRODUCT. YOU MAY OBTAIN ADDITIONAL INFORMATION AND TECHNICAL SUPPORT BY CALLING WILWOOD AT (805) 388-1188, OR VISIT OUR WEB SITE AT WWW.WILWOOD.COM. USE OF WILWOOD TECHNICAL SUPPORT DOES NOT GUARANTEE PROPER INSTALLATION. YOU, OR THE PERSON WHO DOES THE INSTALLATION MUST KNOW HOW TO PROPERLY USE THIS PRODUCT. IT IS NOT POSSIBLE OVER THE PHONE TO UNDERSTAND OR FORESEE ALL THE ISSUES THAT MIGHT ARISE IN YOUR INSTALLATION.

RACING EQUIPMENT AND BRAKES MUST BE MAINTAINED AND SHOULD BE CHECKED REGULARLY FOR FATIGUE, DAMAGE, AND WEAR.

General Information: Before installation of the Wilwood GS Compact Master Cylinder Rebuild Kit, it is important to check the following items to ensure a trouble-free installation:

- Make sure this is the correct kit that corresponds to the bore size of your master cylinder.
- Inspect the package contents against the parts list to ensure that all components are included.
- Read the instructions and study Figure 1 to familiarize yourself with the procedure before you begin.
- Prepare a clean work area for rebuilding the master cylinder

ITEM NO.	DESCRIPTION	QTY
1	Dust Boot	1
2	Snap Ring	1
3	Washer	1
4	Push Rod	1
5	Piston Assembly	1
6	Nut	1

4700 Calle Bolero • Camarillo, CA 93012 Phone (805) 388-1188 • Fax (805) 388-4938
DS-1153 REV DATE: 01-15-16 www.wilwood.com

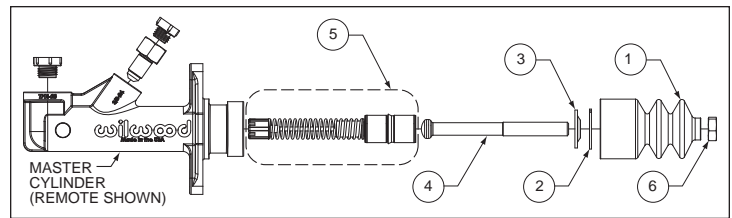


Figure 1. Master Cylinder Rebuilding Assembly Diagram

Rebuilding Instructions: Numbers in parenthesis refer to the parts depicted in Figure 1. Refer to Figure 1 as necessary during the rebuilding procedure.

Remove the master cylinder from the vehicle and drain all residual brake fluid. Remove the dust boot (1), snap ring (2) and washer (3). Gently pull the push rod (4), and piston assembly (5) out of the master cylinder.

Inspect the wall of the master cylinder bore for scratches or pitting. If scratches or pitting is apparent, then you **MUST** replace the master cylinder instead of rebuilding it. **Caution:** Do not use crocus cloth or hones on aluminum master cylinder bores. Honing aluminum master cylinder bores will result in rapid seal-wear and brake failure.

Thoroughly clean the master cylinder bore before installing new components.

Use Wilwood's Hi-Temp® 570 or EXP 600 Plus brake fluid as a lubricant when assembling.

Slide the new piston assembly (5) into the master cylinder taking care not to damage the piston assembly seal.

Compress piston assembly spring in master cylinder bore by applying light force on pushrod-end of piston assembly (5), install pushrod (4) and washer (3), secure using the snap ring (2). Install new dust boot (1).

Reinstalling Master Cylinder Install Master Cylinder into vehicle, connect brake lines and brake pedal, if required. Be sure there is free-play of at least 3/8" when pedal is in the non-depressed position. Sticky pedal shaft, rubbing pedal parts, etc., may interfere with pedal free-play.

Bleeding Instructions: For GS Compact Master Cylinder bleeding instructions, refer to Wilwood Data Sheet DS-1151, downloadable at www.wilwood.com/pdf/ds1151.pdf

If after following the instructions, you still have difficulty in rebuilding or bleeding your master cylinder, consult your local chassis builder, or retailer where the kit was purchased for further assistance.

WARNING

BEFORE OPERATING VEHICLE, TEST THE BRAKES UNDER CONTROLLED CONDITIONS. MAKE SEVERAL STOPS IN A SAFE AREA FROM LOW SPEEDS AND ONLY GRADUALLY WORK UP TO HIGHER SPEEDS. **DO NOT RACE ON UNTESTED BRAKES!** ALWAYS UTILIZE SAFETY RESTRAINT SYSTEMS WHILE OPERATING VEHICLE.

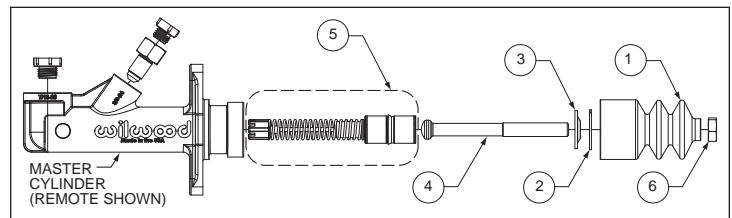


Figure 1. Master Cylinder Rebuilding Assembly Diagram

Rebuilding Instructions: Numbers in parenthesis refer to the parts depicted in Figure 1. Refer to Figure 1 as necessary during the rebuilding procedure.

Remove the master cylinder from the vehicle and drain all residual brake fluid. Remove the dust boot (1), snap ring (2) and washer (3). Gently pull the push rod (4), and piston assembly (5) out of the master cylinder.

Inspect the wall of the master cylinder bore for scratches or pitting. If scratches or pitting is apparent, then you **MUST** replace the master cylinder instead of rebuilding it. **Caution:** Do not use crocus cloth or hones on aluminum master cylinder bores. Honing aluminum master cylinder bores will result in rapid seal-wear and brake failure.

Thoroughly clean the master cylinder bore before installing new components.

Use Wilwood's Hi-Temp® 570 or EXP 600 Plus brake fluid as a lubricant when assembling.

Slide the new piston assembly (5) into the master cylinder taking care not to damage the piston assembly seal.

Compress piston assembly spring in master cylinder bore by applying light force on pushrod-end of piston assembly (5), install pushrod (4) and washer (3), secure using the snap ring (2). Install new dust boot (1).

Reinstalling Master Cylinder Install Master Cylinder into vehicle, connect brake lines and brake pedal, if required. Be sure there is free-play of at least 3/8" when pedal is in the non-depressed position. Sticky pedal shaft, rubbing pedal parts, etc., may interfere with pedal free-play.

Bleeding Instructions: For GS Compact Master Cylinder bleeding instructions, refer to Wilwood Data Sheet DS-1151, downloadable at www.wilwood.com/pdf/ds1151.pdf

If after following the instructions, you still have difficulty in rebuilding or bleeding your master cylinder, consult your local chassis builder, or retailer where the kit was purchased for further assistance.

WARNING

BEFORE OPERATING VEHICLE, TEST THE BRAKES UNDER CONTROLLED CONDITIONS. MAKE SEVERAL STOPS IN A SAFE AREA FROM LOW SPEEDS AND ONLY GRADUALLY WORK UP TO HIGHER SPEEDS. **DO NOT RACE ON UNTESTED BRAKES!** ALWAYS UTILIZE SAFETY RESTRAINT SYSTEMS WHILE OPERATING VEHICLE.



GS COMPACT MASTER CYLINDER REBUILD KIT

This package contains the following:

- .50" Bore Rebuild Kit, P/N 260-14116 .75" Bore Rebuild Kit, P/N 260-14119
 .62" Bore Rebuild Kit, P/N 260-14117 .81" Bore Rebuild Kit, P/N 260-14120
 .70" Bore Rebuild Kit, P/N 260-14118

WARNING

IT IS THE RESPONSIBILITY OF THE PERSON INSTALLING ANY BRAKE COMPONENT OR KIT TO DETERMINE THE SUITABILITY OF THE COMPONENT OR KIT FOR THAT PARTICULAR APPLICATION. IF YOU ARE NOT SURE HOW TO SAFELY USE THIS BRAKE COMPONENT OR KIT, YOU SHOULD NOT INSTALL OR USE IT. DO NOT ASSUME ANYTHING. IMPROPERLY INSTALLED OR MAINTAINED BRAKES ARE DANGEROUS. IF YOU ARE NOT SURE, GET HELP OR RETURN THE PRODUCT. YOU MAY OBTAIN ADDITIONAL INFORMATION AND TECHNICAL SUPPORT BY CALLING WILWOOD AT (805) 388-1188, OR VISIT OUR WEB SITE AT WWW.WILWOOD.COM. USE OF WILWOOD TECHNICAL SUPPORT DOES NOT GUARANTEE PROPER INSTALLATION. YOU, OR THE PERSON WHO DOES THE INSTALLATION MUST KNOW HOW TO PROPERLY USE THIS PRODUCT. IT IS NOT POSSIBLE OVER THE PHONE TO UNDERSTAND OR FORESEE ALL THE ISSUES THAT MIGHT ARISE IN YOUR INSTALLATION.

RACING EQUIPMENT AND BRAKES MUST BE MAINTAINED AND SHOULD BE CHECKED REGULARLY FOR FATIGUE, DAMAGE, AND WEAR.

General Information: Before installation of the Wilwood GS Compact Master Cylinder Rebuild Kit, it is important to check the following items to ensure a trouble-free installation:

- Make sure this is the correct kit that corresponds to the bore size of your master cylinder.
- Inspect the package contents against the parts list to ensure that all components are included.
- Read the instructions and study Figure 1 to familiarize yourself with the procedure before you begin.
- Prepare a clean work area for rebuilding the master cylinder

ITEM NO.	DESCRIPTION	QTY
1	Dust Boot	1
2	Snap Ring	1
3	Washer	1
4	Push Rod	1
5	Piston Assembly	1
6	Nut	1

4700 Calle Bolero • Camarillo, CA 93012 Phone (805) 388-1188 • Fax (805) 388-4938
 DS-1153 REV DATE: 01-15-16 www.wilwood.com



GS COMPACT MASTER CYLINDER REBUILD KIT

This package contains the following:

- .50" Bore Rebuild Kit, P/N 260-14116 .75" Bore Rebuild Kit, P/N 260-14119
 .62" Bore Rebuild Kit, P/N 260-14117 .81" Bore Rebuild Kit, P/N 260-14120
 .70" Bore Rebuild Kit, P/N 260-14118

WARNING

IT IS THE RESPONSIBILITY OF THE PERSON INSTALLING ANY BRAKE COMPONENT OR KIT TO DETERMINE THE SUITABILITY OF THE COMPONENT OR KIT FOR THAT PARTICULAR APPLICATION. IF YOU ARE NOT SURE HOW TO SAFELY USE THIS BRAKE COMPONENT OR KIT, YOU SHOULD NOT INSTALL OR USE IT. DO NOT ASSUME ANYTHING. IMPROPERLY INSTALLED OR MAINTAINED BRAKES ARE DANGEROUS. IF YOU ARE NOT SURE, GET HELP OR RETURN THE PRODUCT. YOU MAY OBTAIN ADDITIONAL INFORMATION AND TECHNICAL SUPPORT BY CALLING WILWOOD AT (805) 388-1188, OR VISIT OUR WEB SITE AT WWW.WILWOOD.COM. USE OF WILWOOD TECHNICAL SUPPORT DOES NOT GUARANTEE PROPER INSTALLATION. YOU, OR THE PERSON WHO DOES THE INSTALLATION MUST KNOW HOW TO PROPERLY USE THIS PRODUCT. IT IS NOT POSSIBLE OVER THE PHONE TO UNDERSTAND OR FORESEE ALL THE ISSUES THAT MIGHT ARISE IN YOUR INSTALLATION.

RACING EQUIPMENT AND BRAKES MUST BE MAINTAINED AND SHOULD BE CHECKED REGULARLY FOR FATIGUE, DAMAGE, AND WEAR.

General Information: Before installation of the Wilwood GS Compact Master Cylinder Rebuild Kit, it is important to check the following items to ensure a trouble-free installation:

- Make sure this is the correct kit that corresponds to the bore size of your master cylinder.
- Inspect the package contents against the parts list to ensure that all components are included.
- Read the instructions and study Figure 1 to familiarize yourself with the procedure before you begin.
- Prepare a clean work area for rebuilding the master cylinder

ITEM NO.	DESCRIPTION	QTY
1	Dust Boot	1
2	Snap Ring	1
3	Washer	1
4	Push Rod	1
5	Piston Assembly	1
6	Nut	1

4700 Calle Bolero • Camarillo, CA 93012 Phone (805) 388-1188 • Fax (805) 388-4938
 DS-1153 REV DATE: 01-15-16 www.wilwood.com

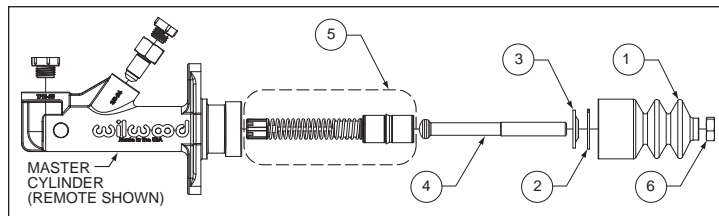


Figure 1. Master Cylinder Rebuilding Assembly Diagram

Rebuilding Instructions: Numbers in parenthesis refer to the parts depicted in Figure 1. Refer to Figure 1 as necessary during the rebuilding procedure.

Remove the master cylinder from the vehicle and drain all residual brake fluid. Remove the dust boot (1), snap ring (2) and washer (3). Gently pull the push rod (4), and piston assembly (5) out of the master cylinder.

Inspect the wall of the master cylinder bore for scratches or pitting. If scratches or pitting is apparent, then you **MUST** replace the master cylinder instead of rebuilding it. **Caution:** Do not use crocus cloth or hones on aluminum master cylinder bores. Honing aluminum master cylinder bores will result in rapid seal-wear and brake failure.

Thoroughly clean the master cylinder bore before installing new components.

Use Wilwood's Hi-Temp® 570 or EXP 600 Plus brake fluid as a lubricant when assembling.

Slide the new piston assembly (5) into the master cylinder taking care not to damage the piston assembly seal.

Compress piston assembly spring in master cylinder bore by applying light force on pushrod-end of piston assembly (5), install pushrod (4) and washer (3), secure using the snap ring (2). Install new dust boot (1).

Reinstalling Master Cylinder Install Master Cylinder into vehicle, connect brake lines and brake pedal, if required. Be sure there is free-play of at least 3/8" when pedal is in the non-depressed position. Sticky pedal shaft, rubbing pedal parts, etc., may interfere with pedal free-play.

Bleeding Instructions: For GS Compact Master Cylinder bleeding instructions, refer to Wilwood Data Sheet DS-1151, downloadable at www.wilwood.com/pdf/ds1151.pdf

If after following the instructions, you still have difficulty in rebuilding or bleeding your master cylinder, consult your local chassis builder, or retailer where the kit was purchased for further assistance.

WARNING

BEFORE OPERATING VEHICLE, TEST THE BRAKES UNDER CONTROLLED CONDITIONS. MAKE SEVERAL STOPS IN A SAFE AREA FROM LOW SPEEDS AND ONLY GRADUALLY WORK UP TO HIGHER SPEEDS. **DO NOT RACE ON UNTESTED BRAKES!** ALWAYS UTILIZE SAFETY RESTRAINT SYSTEMS WHILE OPERATING VEHICLE.

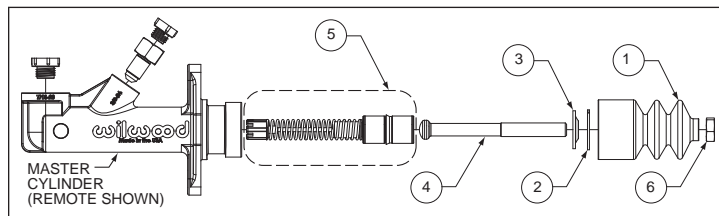


Figure 1. Master Cylinder Rebuilding Assembly Diagram

Rebuilding Instructions: Numbers in parenthesis refer to the parts depicted in Figure 1. Refer to Figure 1 as necessary during the rebuilding procedure.

Remove the master cylinder from the vehicle and drain all residual brake fluid. Remove the dust boot (1), snap ring (2) and washer (3). Gently pull the push rod (4), and piston assembly (5) out of the master cylinder.

Inspect the wall of the master cylinder bore for scratches or pitting. If scratches or pitting is apparent, then you **MUST** replace the master cylinder instead of rebuilding it. **Caution:** Do not use crocus cloth or hones on aluminum master cylinder bores. Honing aluminum master cylinder bores will result in rapid seal-wear and brake failure.

Thoroughly clean the master cylinder bore before installing new components.

Use Wilwood's Hi-Temp® 570 or EXP 600 Plus brake fluid as a lubricant when assembling.

Slide the new piston assembly (5) into the master cylinder taking care not to damage the piston assembly seal.

Compress piston assembly spring in master cylinder bore by applying light force on pushrod-end of piston assembly (5), install pushrod (4) and washer (3), secure using the snap ring (2). Install new dust boot (1).

Reinstalling Master Cylinder Install Master Cylinder into vehicle, connect brake lines and brake pedal, if required. Be sure there is free-play of at least 3/8" when pedal is in the non-depressed position. Sticky pedal shaft, rubbing pedal parts, etc., may interfere with pedal free-play.

Bleeding Instructions: For GS Compact Master Cylinder bleeding instructions, refer to Wilwood Data Sheet DS-1151, downloadable at www.wilwood.com/pdf/ds1151.pdf

If after following the instructions, you still have difficulty in rebuilding or bleeding your master cylinder, consult your local chassis builder, or retailer where the kit was purchased for further assistance.

WARNING

BEFORE OPERATING VEHICLE, TEST THE BRAKES UNDER CONTROLLED CONDITIONS. MAKE SEVERAL STOPS IN A SAFE AREA FROM LOW SPEEDS AND ONLY GRADUALLY WORK UP TO HIGHER SPEEDS. **DO NOT RACE ON UNTESTED BRAKES!** ALWAYS UTILIZE SAFETY RESTRAINT SYSTEMS WHILE OPERATING VEHICLE.