

**DISC BRAKES**  
**wilwood**

**GM AFX BODY**

**AEROLITE 6R / FNSL6R  
PRO-TOURING GT FRONT BRAKE KITS**



*Pro-Touring GT Series brake kits for GM muscle cars define the standard for durability and consistency on street cars competing at championship levels in autocross and "shootout-style" time trial events. GT series kits are engineered specific for the OE spindles, or any other spindle built to accept the OEM brakes.*



## **KIT FEATURES**

- Choice of Aerolite 6R or Superlite 6R calipers with Quick-Silver nickel plate finish and stainless steel pistons
- Dynamic mount 12.88" or 14.00" diameter **Spec37** alloy GT series competition rotors
- Precision-machined, forged aluminum hats with dynamic rotor mounting hardware
- Forged aluminum hubs with billet screw-in dust caps and premium grade 1/2-20 x 2" long wheel lug studs
- BP-20 street-friendly, high-temp compound **SmartPads**
- All new hub bearings, seals and installation hardware
- Requires stainless steel braided flexline kit. Order separately by vehicle year/make/model



Note: Check [www.wilwood.com](http://www.wilwood.com) for complete year/make/model application data and specific wheel clearance requirements.

## AEROLITE 6R / FNSL6R PRO-TOURING GT FRONT BRAKE KITS

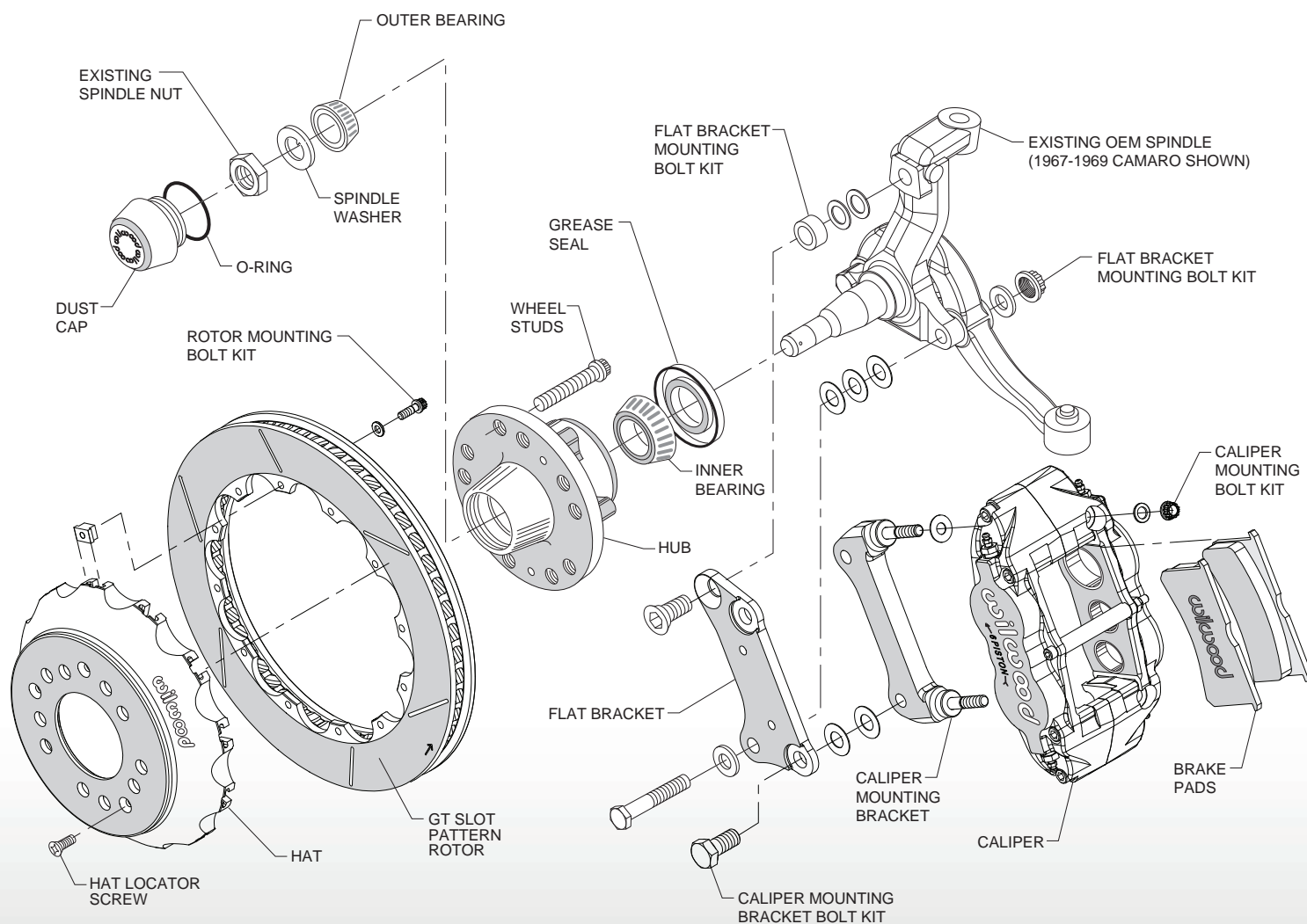


Figure 1. Typical Installation Diagram, Front Superlite Kit Shown

**PLEASE CHECK:** WILWOOD ALWAYS RECOMMENDS CHECKING [www.wilwood.com](http://www.wilwood.com) FOR COMPLETE YEAR/MAKE/MODEL APPLICATION DATA AND SPECIFIC WHEEL CLEARANCE REQUIREMENTS.

### ORDERING INFORMATION: Brake Kits for GM 1964-1972 A-Body, 1967-1969 F-Body and 1964-1974 X-Body Vehicles

PART NUMBER	DESCRIPTION	CALIPER FINISH
<a href="#">140-14542-N</a>	Front Kit with Superlite 6R Calipers, 12.88" <b>Spec37</b> GT Competition Series Rotors	Quick-Silver Nickel
<a href="#">140-14543-N</a>	Front Kit with Superlite 6R Calipers, 14.00" <b>Spec37</b> GT Competition Series Rotors	Quick-Silver Nickel
<a href="#">140-14544-N</a>	Front Kit with Aerolite 6R Calipers, 14.00" <b>Spec37</b> GT Competition Series Rotors	Quick-Silver Nickel