

WILWOOD'S WLD-20

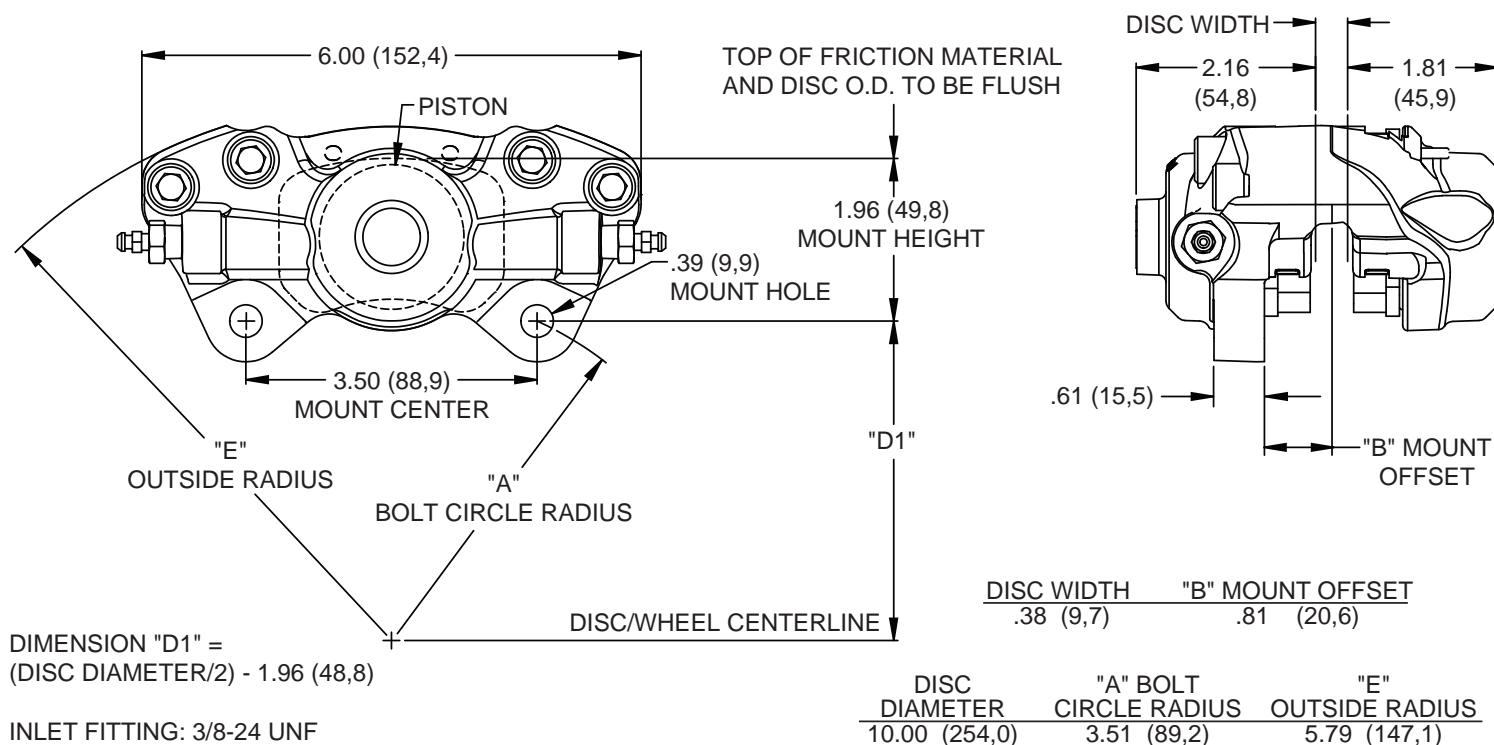
*forged aluminum
two piston lug
mount calipers
provide the
ultimate in
strength, weight
savings and high efficiency
brake clamping for F/F and all
other formula-category road race
vehicles configured for use with the traditional LD-20 lug
mount-style calipers.*



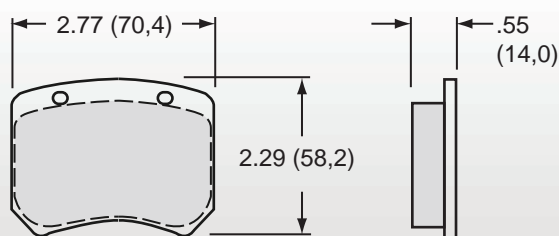
CALIPER FEATURES



- Retains original LD-20 mount centers, height and offset
- High strength, lightweight 2.3 pound forged aluminum body with hard-coat anodized finish
- WLD-20/ST model uses Thermlock® pistons to reduce heat transfer from the pads into the caliper body, fluid and seals
- WLD-20 base model uses stainless steel pistons
- All models feature internal seal-in-bore design with high-temp square section seals
- Calipers include internal piston damping springs and stainless steel bridge abutment plates
- Internal fluid transfer with single screw bleeding
- Accepts Wilwood-type 5214 or any pads made for LD-20 calipers
- 3/8-24 inlet port to accommodate banjo or straight union inlet fittings
- One part number fits right or left, lead or trail mounting



WLD-20 Caliper, Dimensional Characteristics



AXLE SET P/N	PAD TYPE / COMPOUND
15E - 8304K	5214 PolyMatrix E
15H - 8303K	5214 PolyMatrix H

WLD-20 Caliper, Type 5214 Brake Pad Dimensions and Ordering Information

ORDERING INFORMATION: Wilwood WLD-20 Calipers and Related Components

PART NUMBER	DESCRIPTION	CALIPER FINISH
120-14375	WLD-20 Caliper, 1.75" Bore for .38" Rotor, Stainless Steel Pistons	Hard Anodize
120-14376	WLD-20/ST Caliper, 1.75" Bore for .38" Rotor, Thermlock® Pistons	Hard Anodize
15E-8304K	Pad, Axle Set, 5214E PolyMatrix, Short Course / Autocross Compound	N/A
15H-8303K	Pad, Axle Set, 5214H PolyMatrix, Road Race Extended Duty Compound	N/A
220-13674	Fitting Kit, Caliper Inlet, 3/8-24 -3 AN Male Banjo Style, 90 Degree	N/A
220-3406	Fitting, Caliper Inlet, 3/8-24 to -3 JIC Male, Straight Union	N/A
240-2705	Sealing Washer, Annealed Copper for Fitting 220-3406	N/A
130-2655	Square Ring Seal Kit, 4 Pack	N/A
220-0627	Bleed Screw Fitting Kit, 4 Pack	N/A
180-0055	Cotter Pin Kit, 10 Pack	N/A