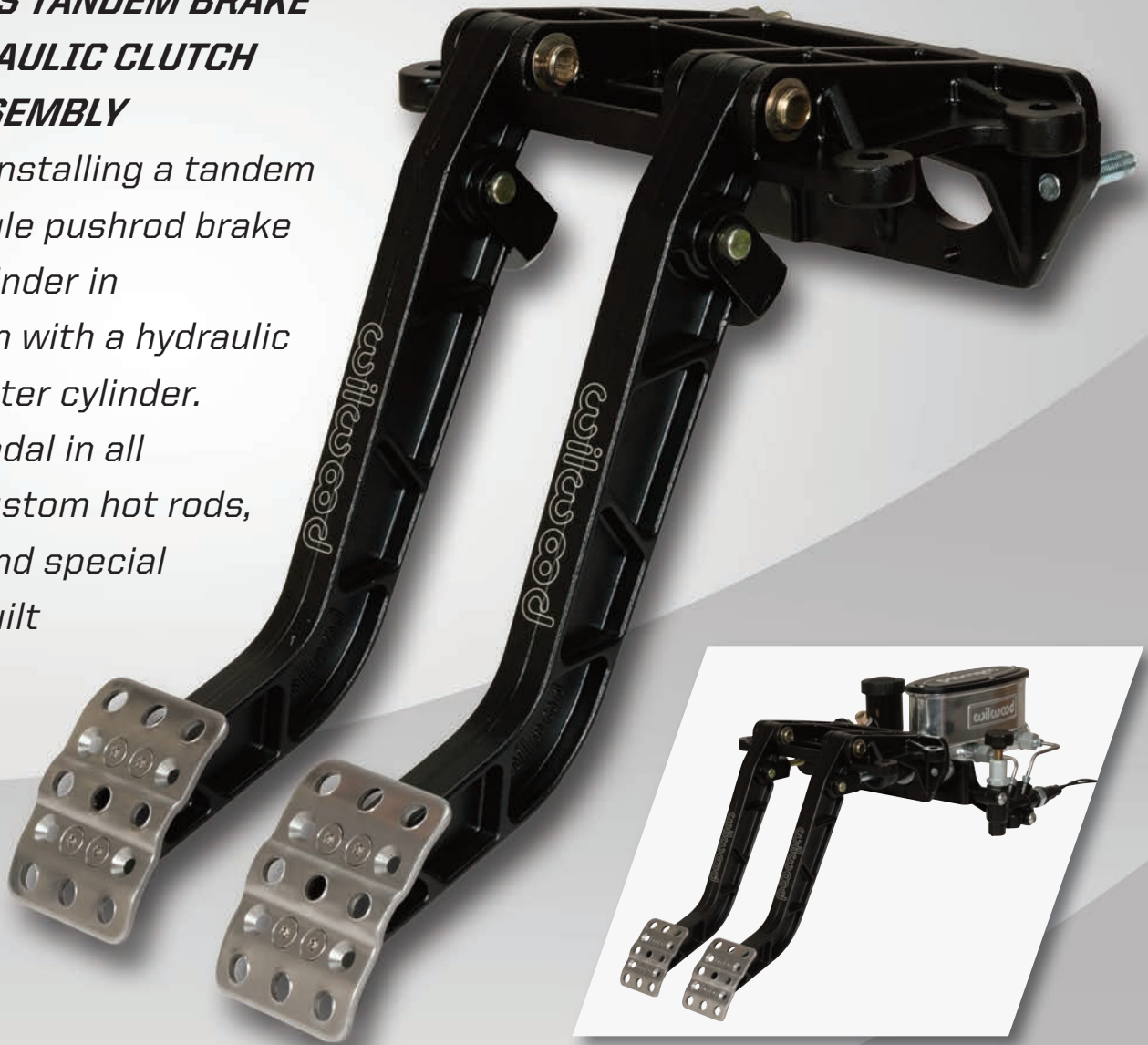


WILWOOD'S TANDEM BRAKE AND HYDRAULIC CLUTCH PEDAL ASSEMBLY

simplifies installing a tandem outlet, single pushrod brake master cylinder in conjunction with a hydraulic clutch master cylinder. Use this pedal in all types of custom hot rods, racecars and special purpose-built machines.



Pedal shown with optional master cylinders and combination proportioning valve

PEDAL FEATURES

- Mounts common horizontal flange tandem brake master cylinders with 3.25" bolt spacing
- Forward swing mount design positions cylinders outside the firewall away from the driver
- Laterally adjustable no-slip waffle style stainless steel foot pads
- Uses vertical flange mount clutch cylinders with 2.25" bolt spacing
- High strength reinforced H beam design forged aluminum arms
- Available 6.25:1 or 7.00:1 ratios to accommodate leverage and mounting space requirements



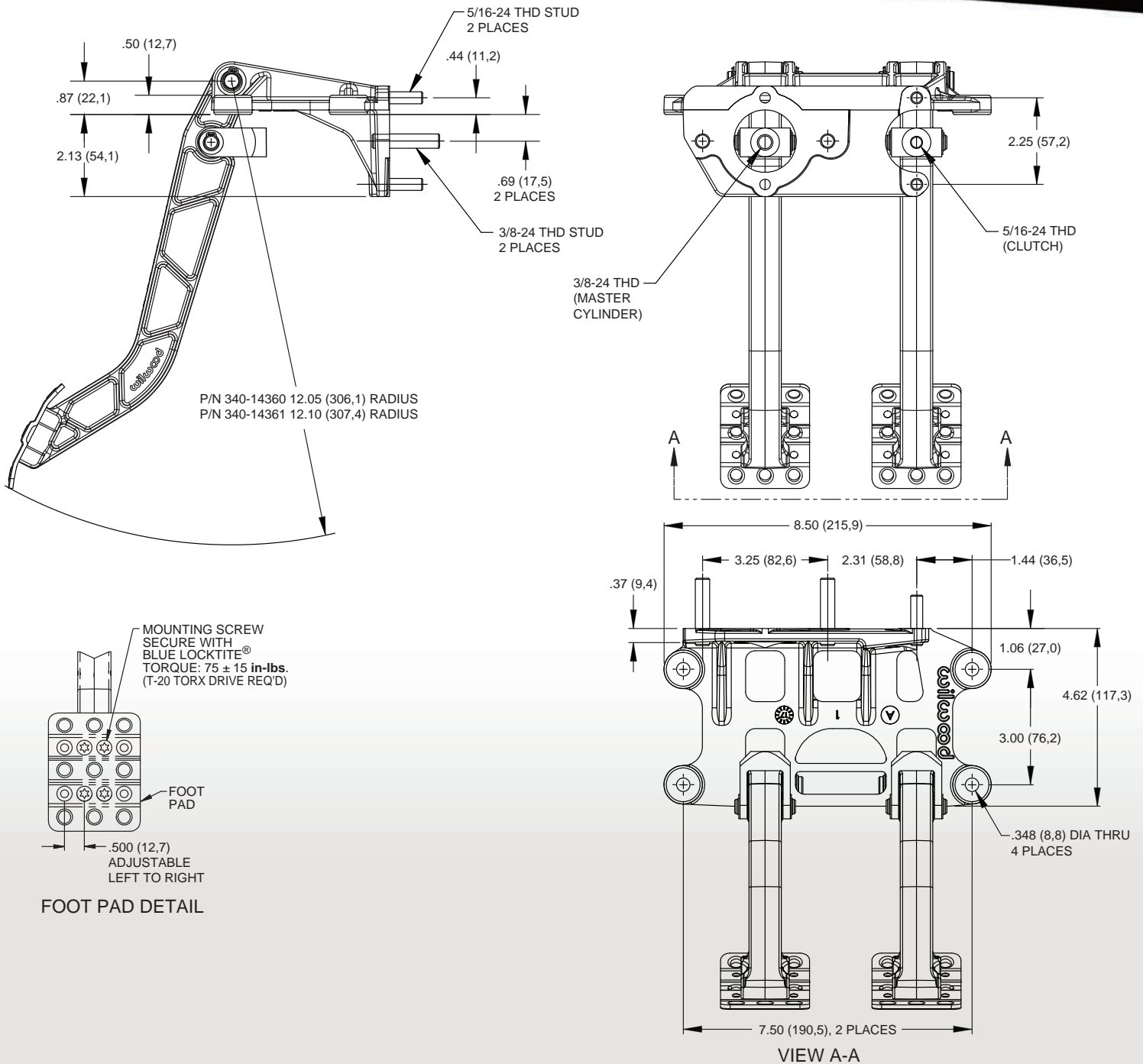


Figure 1. Physical Characteristics

ORDERING INFORMATION: Brake and Clutch Pedal Assembly

PART NUMBER	DESCRIPTION	PEDAL RATIO
340-14360	Forward Mount Clutch / Brake Pedal Assembly	6.25:1
340-14361	Forward Mount Clutch / Brake Pedal Assembly	7.00:1