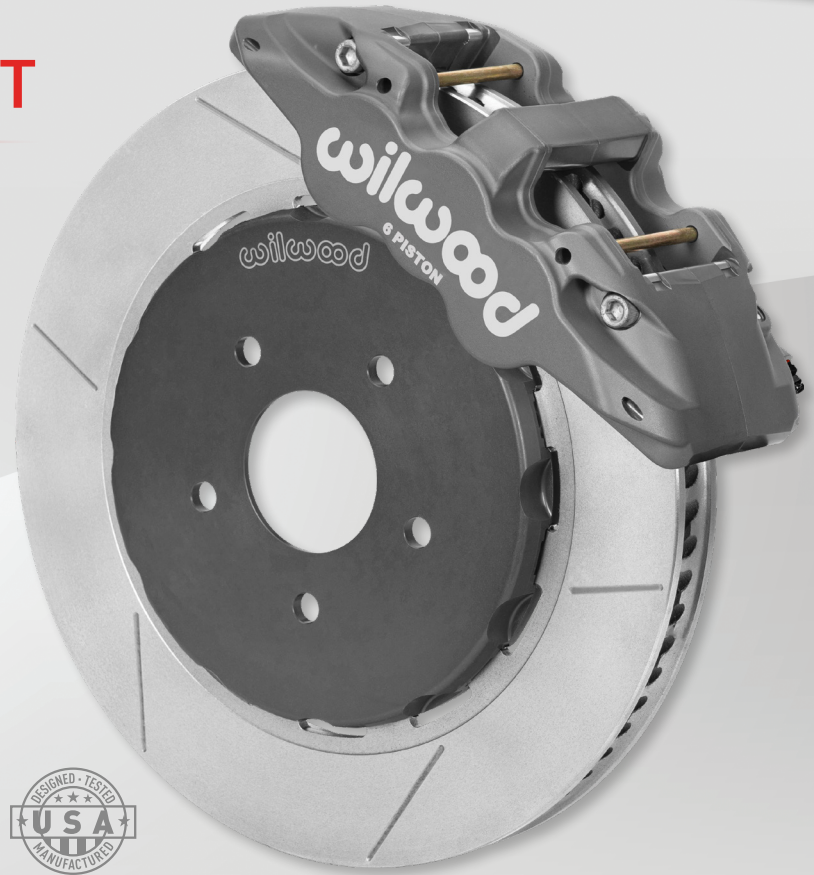


## AEROLITE 6R FRONT DISC BRAKE KIT

Aerolite 6R calipers, BP-30 race compound **SmartPads**, and dynamic lug-drive **Spec37** alloy **SV/GT** staggered vane directional rotors combine to deliver high capacity, consistent braking and thermal stability in autocross and club racing track days. Kits are a direct bolt-on for production C5/C6 cars, or custom builds using Corvette uprights and suspension.

### KIT FEATURES:

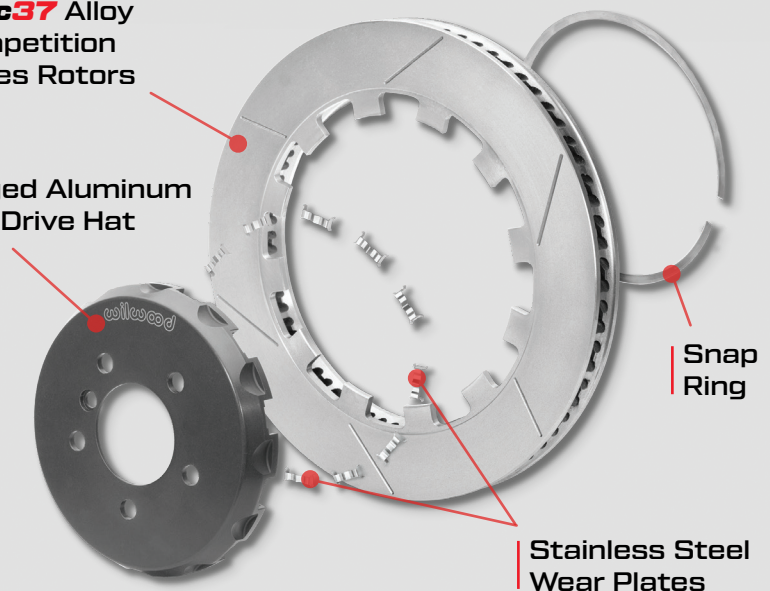
- **Aerolite 6R** forged aluminum radial-mount calipers with Type III Mil-Spec hard anodized finish, resist wear and abrasion for long service.
- Six differential bore, stainless steel pistons provide balanced pad loading for even wear, with resistance to heat transfer into the caliper.
- **Spec37** alloy 14" **SV/GT** lug-drive rotors with 72 staggered directional vanes deliver high thermal stability and optimized cooling.
- Forged aluminum, dynamic mount lug-drive hats, with stainless steel wear inserts, connect the rotors to the original equipment style hubs.
- Dynamic mount lug drive hats, with stainless steel wear inserts, allow the rotors to "float" and eliminate stress at the mounting points caused by thermal expansion of the rotors.
- Lug drive rotors are retained in the hats with a large, single snap ring, eliminating Rotor bolts, thread lockers, and safety wire.
- **BP-30** compound **SmartPads** are a long wear, high-friction endurance compound with smooth, predictable engagement at all temperatures.
- Fully compatible with the OE Corvette master cylinder output, ABS, and all electronic controls.
- Approved for Spec Corvette series competition.



### Dynamic Mount Lug-Drive Technology

#### **Spec37** Alloy Competition Series Rotors

#### Forged Aluminum Lug-Drive Hat



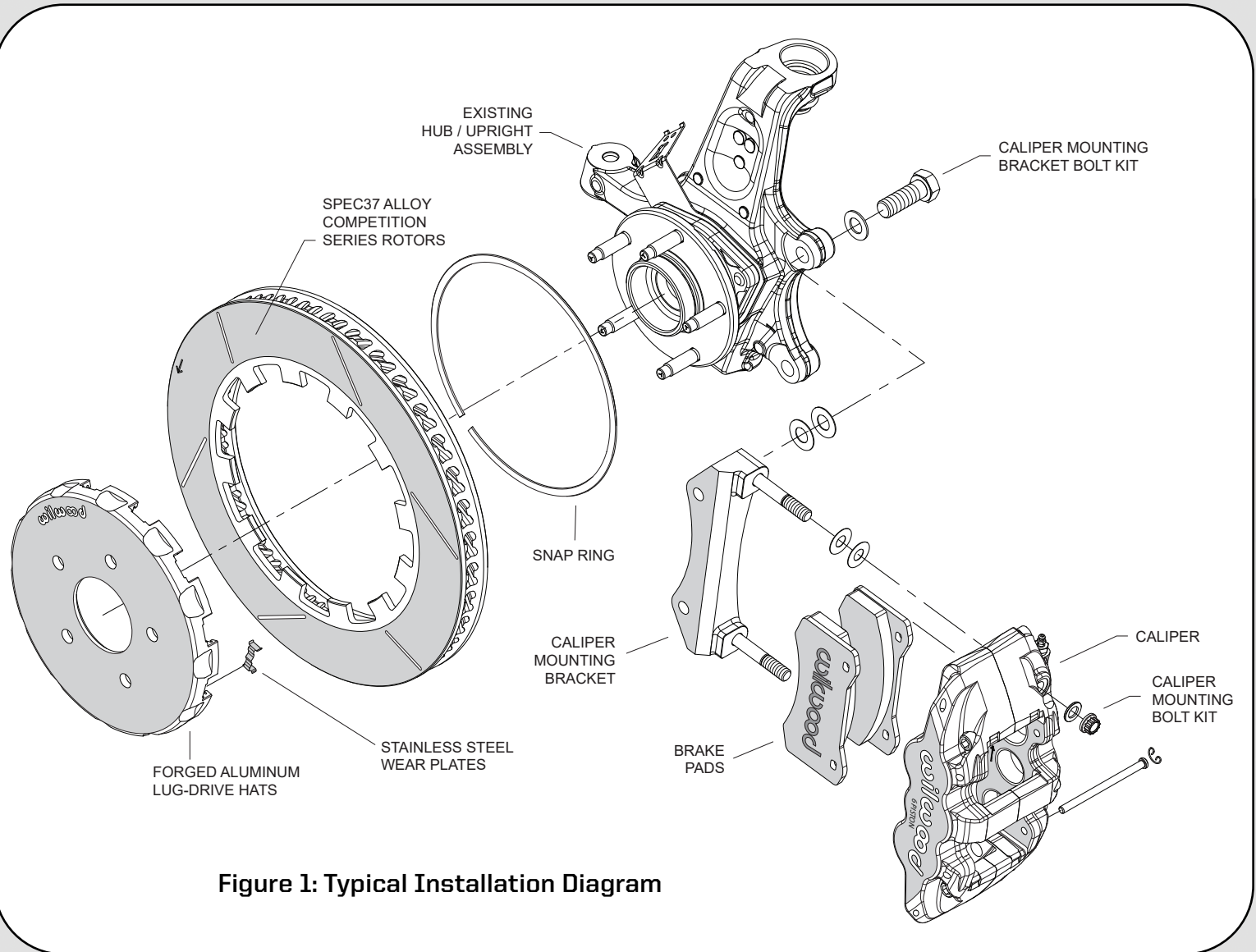


Figure 1: Typical Installation Diagram

ORDERING INFORMATION: PH: 805.388.1188 • FAX: 805.388.4938 • [wilwood.com](http://wilwood.com) • [info@wilwood.com](mailto:info@wilwood.com)

PART NUMBER	DESCRIPTION	CALIPER FINISH
<a href="#">140-14557</a>	Front Brake Kit, Aero 6R, <b>Spec37</b> 14" SV/GT-72 Rotors, BP-30 Compound <b>SmartPads</b>	Type III Hard Anodized
<a href="#">220-8176</a>	Stainless Steel Braided Flexline Kit, 1997-2004 C5, DOT Approved	
<a href="#">220-9100</a>	Stainless Steel braided Flexline Kit, 2005-2013 C6, DOT Approved	
<a href="#">290-6209</a>	EXP 600 Plus Racing Brake Fluid, DOT 4 Compliant, 16.9 oz	
<a href="#">290-16353</a>	XR Racing Brake Fluid, Off-Highway Use Only, 16.9 oz	