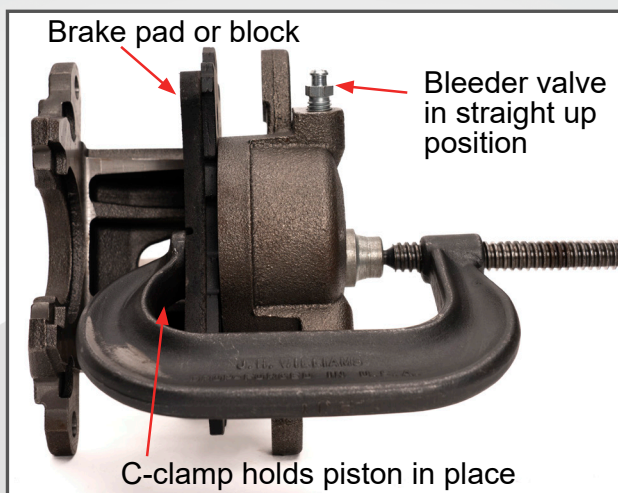


## BLEEDING INSTRUCTIONS SPECIFIC TO D154 GM-METRIC CALIPERS

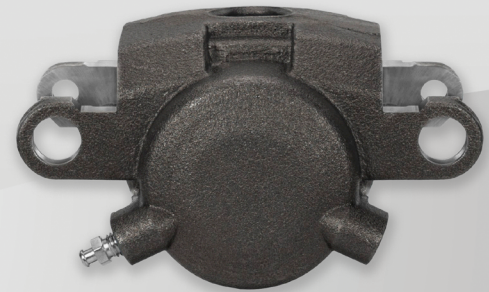
Correct caliper bleed screw location during bleeding is critical. *In order for all air to be purged from the system, the caliper bleed screws must be oriented upright in the 12 o'clock position.*

To achieve this position, it may be necessary to remove a caliper slide pin and rotate the caliper. *Care must be used during this procedure to ensure the piston does not escape the caliper.*



It is recommended to use a clamp with the piston completely pushed back so the backing plate of the pad is flush with the caliper body. Care must be used not to damage the brake pad, or substitute the pad with a block.

When utilizing the clamp method, 100% of fluid movement purges air from the system instead of displacing the piston.



Wilwood's Symmetrical GM-Metric Iron Caliper  
P/N [120-16101](#)



GM's Asymmetrical Metric Iron Caliper

## BRAKE SYSTEM BLEEDING TIPS

- Ensure caliper bleed screws are pointing up - 12 o'clock
- Maintain proper brake fluid levels in master cylinders
- Master cylinder lids should never be fully tightened while bleeding
- Open both front and rear systems with the balance bar centered to allow full pedal stroke
- Utilize bleed bottles to visually inspect for air in system
- Utilize smooth pedal depressions vs. vigorous pumps to keep from aerating the fluid
- Be patient - allow the master cylinder pushrod to return fully and the bore to fill with fluid



Wilwood Bleed Bottle: P/N [260-16018](#)

For technical questions, please reach out to a Wilwood Race Specialist serving your class or category. [WilwoodRacing.com](http://WilwoodRacing.com)