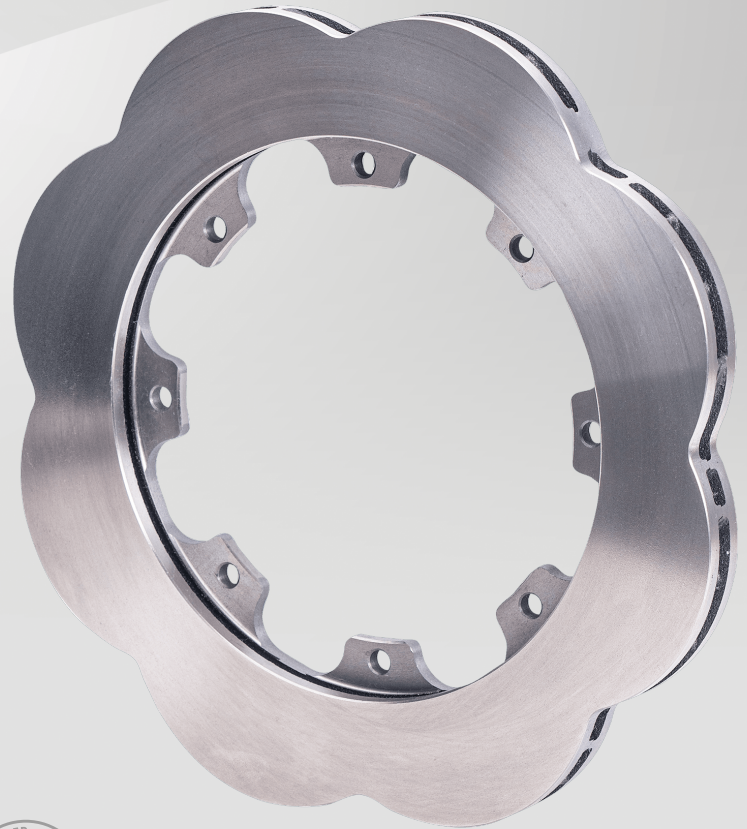


Circle Track Racing **Scalloped** **Spec37** 11.75" x 0.81" Iron Alloy Rotor

Wilwood's proprietary **Spec37** iron alloy is widely know for its friction qualities and resistance to distortion. Scalloped rotors reduce rotating and unsprung weight without reducing brake torque. They are combined in these two rotors that cover many Sprint, Late Model and Modified racing applications.

FEATURES:

- Each rotor weighs only 8 pounds
- **Spec37** iron alloy originally developed for severe duty in armor ed vehicles
- Produces high friction and withstands high temperatures while maintaining structural integrity
- Vented with 36 directional vanes to pump air through the rotor and reduce temperatures
- Full detail machining for smooth pad contact faces with the highest resistance to warping, cracking, and wear
- Replaces most 11.75" x 0.81" traditional rotors with an 8 x 7.00" inner bolt circle



P/N [160-16869](#) - Right Side

P/N [160-16870](#) - Left Side

ORDERING INFO: PH: 805.388.1188 • FAX: 805.388.4938 • [wilwood.com](#) • [info@wilwood.com](#)

| PART NUMBER | DESCRIPTION |
|---------------------------|---|
| 160-16869 | 11.75" Diameter, 0.81" Width Spec37 Scalloped Rotor, 8 x 7.00" Bolt Circle - Right Hand |
| 160-16870 | 11.75" Diameter, 0.81" Width Spec37 Scalloped Rotor, 8 x 7.00" Bolt Circle - Left Hand |