

1995-99 BMW E36 M3 LUG-DRIVE DYNAMIC-MOUNT RACING BIG BRAKE KITS

Lug-Drive dynamic-mount race brake kits for 1995-1999 BMW E36 M3 feature big floating rotors and multi-piston calipers to increase brake torque, minimize pad taper, and reduce fade. The floating rotor eliminates heat distortion by allowing the rotor to expand and contract through heat cycles without constraint. A single snap ring retains the rotor hat eliminating the need for bolts or T-nuts. Rotors stay flatter and run truer. Engineered explicitly for BMW M3 in road race classes using factory spindles.

Caliper piston volumes are matched for full compatibility with the OE master cylinder output and ABS controls.



AEROLITE 14.00" FRONT KIT:

- Aerolite 6R/ST staggered-bore forged aluminum calipers with Type-III hard anodize finish and internal spring-dampened Thermlock™ pistons
- 14.00" (356mm) diameter, two-piece, dynamic-mount **Spec37** iron alloy rotors
- Fits under most 18" or larger wheels

SUPERLITE 13.06" FRONT KIT:

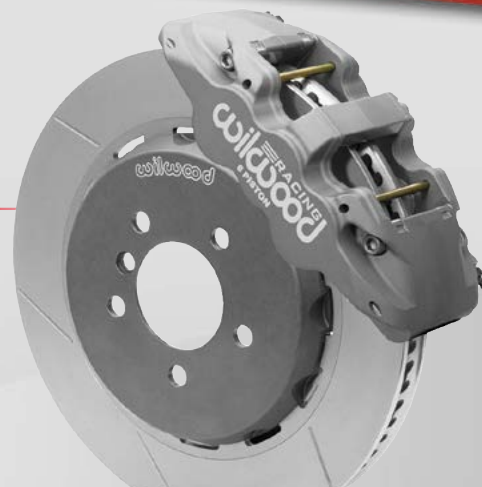
- Superlite 6R/ST staggered-bore forged aluminum calipers with Type-III hard anodize finish, and internal spring-dampened Thermlock pistons
- 13.06" (332mm) diameter, two-piece, dynamic-mount **Spec37** iron alloy rotors
- Fits under many 17" wheels

SUPERLITE 13.00" REAR KIT:

- Superlite 4R/ST forged aluminum calipers with Type-III hard anodize finish and Thermlock pistons sized for proper front-to-rear bias
- 13.00" (330mm) diameter, two-piece, dynamic-mount **Spec37** iron alloy rotor
- Parking brake deleted to save weight

FEATURES:

- High-endurance, smooth-engagement, linear-friction curve BP-30 compound racing pads
- Forged aluminum rotor mounting hats to reduce unsprung and rotational weight
- All-inclusive kits include premium-grade hardware and stainless steel braided Flexlines



AEROLITE 14.00" FRONT KIT
P/N [140-16010](#) AER06R/ST



SUPERLITE 13.06" FRONT KIT
P/N [140-16005](#) FNSSL6R/ST

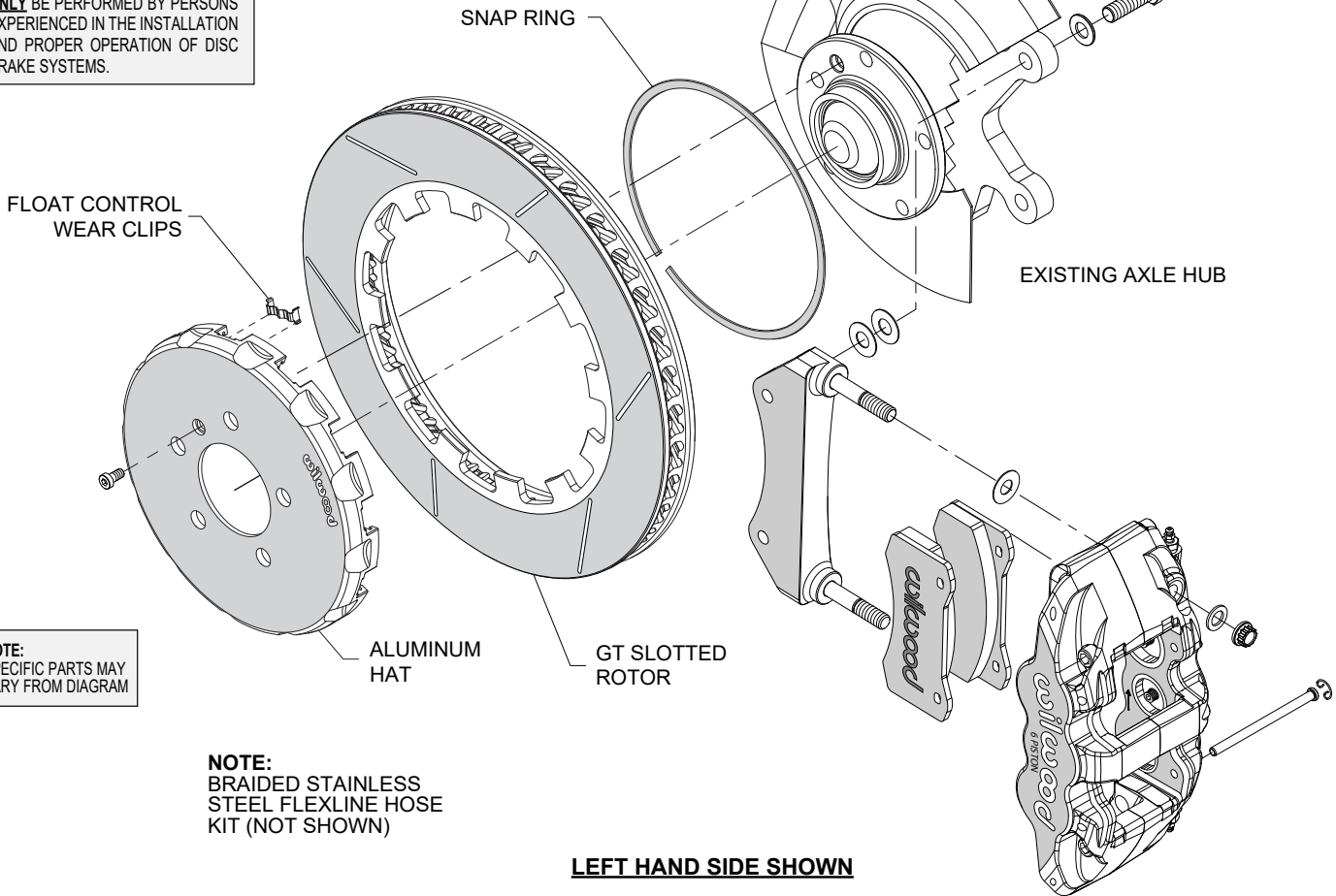


SUPERLITE 13.00" REAR KIT
P/N [140-16017](#) FNSSL4R/ST

1995-99 BMW E36 M3 LUG-DRIVE DYNAMIC-MOUNT RACING BIG BRAKE KITS

TYPICAL INSTALLATION CONFIGURATION

WARNING
INSTALLATION OF THIS KIT SHOULD **ONLY** BE PERFORMED BY PERSONS EXPERIENCED IN THE INSTALLATION AND PROPER OPERATION OF DISC BRAKE SYSTEMS.



ORDERING INFO: PH: 805.388.1188 • FAX: 805.388.4938 • wilwood.com • info@wilwood.com

PART NUMBER	DESCRIPTION	CALIPER TYPE	ROTOR SIZE	ROTOR TYPE
140-16010	Front AERO6R/ST Lug-Drive Race Kit, E36 M3	Aerolite 6R/ST	14.00" x 1.25" (356x32mm)	GT Slotted 72 Curved Vane
140-16005	Front FNSL6R/ST Lug-Drive Race Kit, E36 M3	Forged Narrow Superlite 6R/ST	13.06" x 1.25" (332x32mm)	GT Slotted 48 Curved Vane
140-16017	Rear FNSL4R/ST Lug-Drive Race Kit, E36 M3	Forged Narrow Superlite 6R/ST	13.00" x 1.00" (330x25mm)	GT Slotted 48 Curved Vane