



BILLET SUPERLITE 6/ST AND 6R/ST CALIPERS

Superlite 6/ST Lug Mount:

These popular mid-size calipers feature the same big brake technology used to capture repeated NASCAR championships. The Superlite SL-6/ST demonstrates the ultimate balance between strength, weight and heat management. The super strong billet caliper is fully CNC machined by Wilwood, and built specifically for use with 5 on 5 lug hubs.

At just under five pounds, the SL-6/ST delivers true heavyweight clamp force and stopping power. It features a solid bridge design for rigidity and the absolute highest clamping efficiency. The solid bridges are fitted with replaceable stainless steel wear plates that provide long, smooth operation and easy service. A single, large bridge bolt provides additional strength in the center of the caliper. It is easily removed for fast service to the top loaded pads. The calipers are center fed from the inboard side with a 1/8-27 NPT fluid inlet. The bleeders and transfer tubes are integrally protected, and placed for optimal fluid flow and evacuation.

The special six piston design features a differential bore pattern for optimum pad loading and parallel wear. Thermlock® pistons and a full set of stainless inner heat shields are standard equipment for maximum thermal protection. The unique Thermlock® piston design reduces heat transfer by up to 1/3 over one-piece stainless steel pistons. This keeps the fluid running cooler and seals lasting longer. The special coating on the outer piston shell provides smoother operation with reduced wear in the caliper bores.

The SL-6/ST uses standard 3.5" lug mounting and is a direct replacement for all SL type calipers as used in ARTGO, ASA, NASCAR and many other late model stock car sanctions. This model is also the perfect upgrade for extreme duty applications with rear inboard brake systems on sprints or other open wheel categories using lug type mounting. Also as an optional feature, the SL-6/ST is available with outboard side fluid inlet (-SI suffix when ordering) for limited clearance sidebell mounting applications.



Superlite 6R/ST Radial Mount

The Superlite SL-6R/ST offers the versatility, accuracy and simplified service of radial mounting. With optional brackets, these calipers are easily bolted to a wide range of applications and configurations.

We offer a SL-6R/ST bracket that adapts the 4.86" radial mount pattern of the caliper to the standard 3.5" lug mount pattern. When combined with this bracket, the SL-6R/ST is a direct replacement for any 3.5" lug mount Superlite style caliper.

Also available is a "GT" bracket that adapts the 4.86" radial mount pattern of the caliper to the GT 5.25" mount tabs used on larger stock car spindles. When combined with this bracket, the SL-6R/ST is a direct replacement for the LC-GT Super Speedway caliper.

Note: These calipers are designed for use with 5 on 5 hubs or on direct sidebell mounts used in rear inboard systems and will not fit standard wide 5 hub applications.



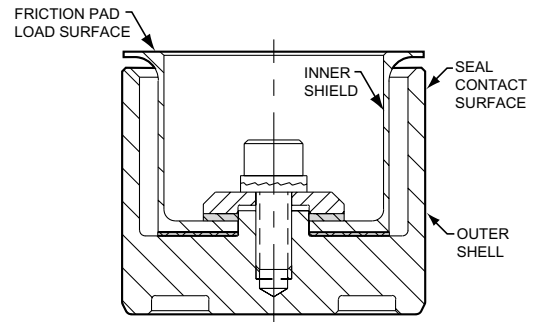
ORDERING INFORMATION:

Thermlock Short Track Piston:

Wilwood's unique Thermlock® Short Track Piston reduces caliper operating temperatures to extend seal life and improve fluid performance. This refined piston design further enhances our insulated shield and shell heat management system, minimizing thermal transfer from the brake pad down the piston wall. Nothing works better towards reducing heat related seal crystallization and localized fluid boiling. As a standard feature on our Superlite SL-6/ST Series calipers, you are assured of maximum heat protection.

1.62" (41,1 mm) Diameter - Order P/N: 200-5403

1.12" (28,4 mm) Diameter - Order P/N: 200-5415



THERMLOCK PISTON CROSS-SECTION

BILLET SUPERLITE SL-6/ST: ⁽¹⁾

DIFFERENTIAL BORE

BORE SIZE	DISC WIDTH	FRONT MOUNT PART NUMBER		REAR MOUNT PART NUMBER	
		RH	LH	RH	LH
1.62/1.12/1.12" 41,1/28,4/28,4 mm	1.25" 31,8 mm	120-6094-FS	120-6095-FS	120-6094-RS	120-6095-RS
1.62/1.12/1.12" 41,1/28,4/28,4 mm	1.25" 31,8 mm	—	—	—	120-6199-SI
1.62/1.12/1.12" 41,1/28,4/28,4 mm	1.00" 25,4 mm	120-6092-FS	120-6093-FS	120-6092-RS	120-6093-RS
1.62/1.12/1.12" 41,1/28,4/28,4 mm	.81" 20,6 mm	120-6090-FS	120-6091-FS	120-6090-RS	120-6091-RS
1.62/1.12/1.12" 41,1/28,4/28,4 mm	.81" 20,6 mm	—	—	—	120-6198-SI

BILLET SUPERLITE SL-6R/ST: ⁽¹⁾

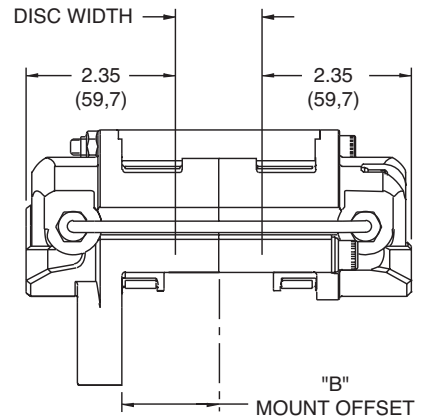
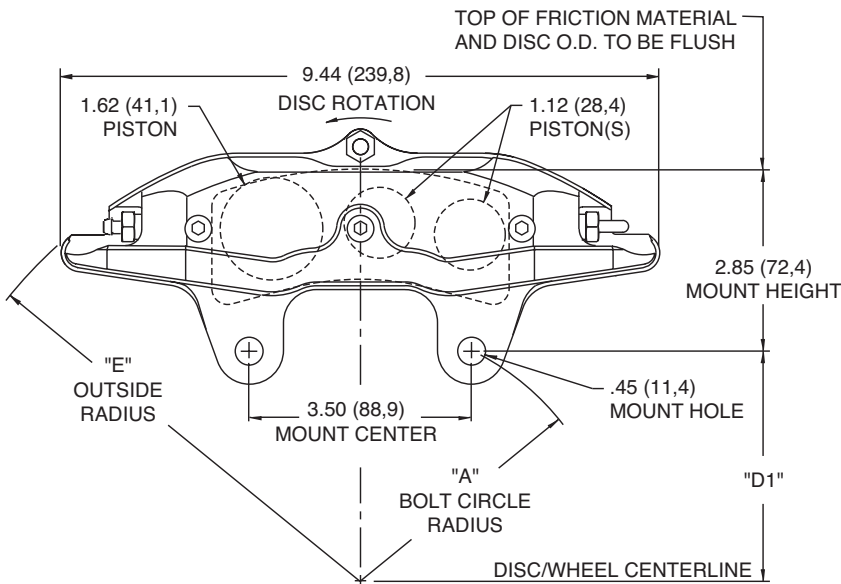
DIFFERENTIAL BORE

BORE SIZE	DISC WIDTH	FRONT MOUNT PART NUMBER		REAR MOUNT PART NUMBER	
		RH	LH	RH	LH
1.62/1.12/1.12" 41,1/28,4/28,4 mm	1.25" 31,8 mm	120-6143-FS	120-6144-FS	120-6143-RS	120-6144-RS
1.62/1.12/1.12" 41,1/28,4/28,4 mm	1.25" 31,8 mm	—	—	—	120-6201-SI
1.62/1.12/1.12" 41,1/28,4/28,4 mm	1.00" 25,4 mm	120-6141-FS	120-6142-FS	120-6141-RS	120-6142-RS
1.62/1.12/1.12" 41,1/28,4/28,4 mm	.81" 20,6 mm	120-6139-FS	120-6140-FS	120-6139-RS	120-6140-RS
1.62/1.12/1.12" 41,1/28,4/28,4 mm	.81" 20,6 mm	—	—	—	120-6200-SI

NOTES: (1) REFERENCE FRONT OF TECHNICAL CATALOG FOR GENERAL ORDERING INFORMATION
FS = FRONT SIDE MOUNT, RS = REAR SIDE MOUNT, SI = SIDE INLET

BILLET SUPERLITE 6/ST AND 6R/ST CALIPERS (Cont)

TYPICAL SUPERLITE 6/ST LUG MOUNT CALIPER, MOUNTING DIMENSIONS (SUPERLITE 6/ST LUG SHOWN):



DISC WIDTH	"B" MOUNT OFFSET
1.38 (35,1)	1.54 (39,1)
1.25 (31,8)	1.54 (39,1)
1.10 (27,9)	1.44 (36,6)
1.00 (25,4)	1.44 (36,6)
.81 (20,6)	1.32 (33,5)

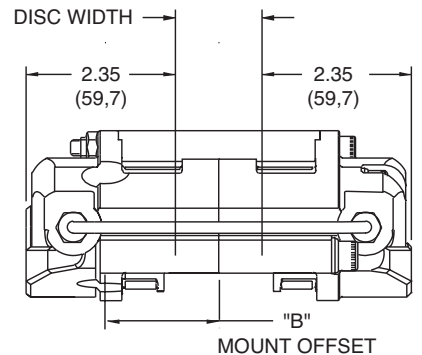
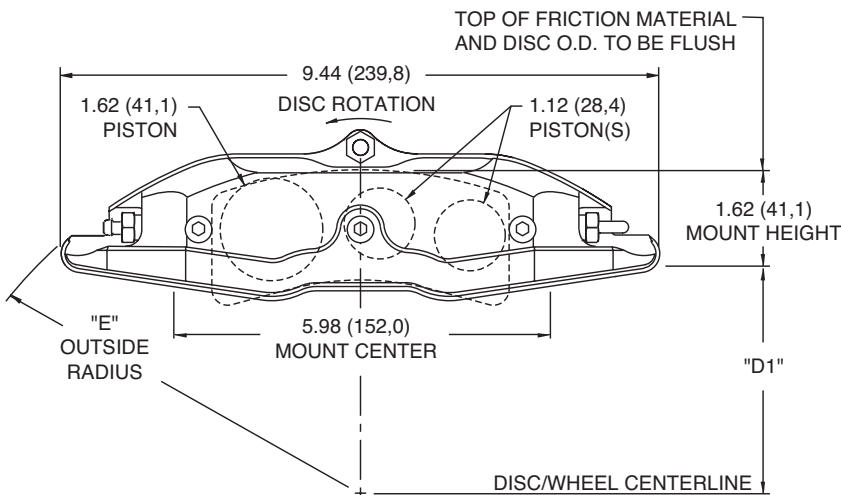
DIMENSION "D1" = (DISC DIAMETER/2) - 2.85 (72,4)

NOTE: RIGHT HAND CALIPER SHOWN. LEFT HAND CALIPER HAS BLEED SCREW AND CROSSOVER TUBE REVERSED.

INLET FITTING: 1/8-27 NPT

DISC DIAMETER	"A" BOLT CIRCLE RADIUS	"E" OUTSIDE RADIUS
11.75 (298,5)	3.49 (88,6)	6.65 (168,9)
12.19 (309,6)	3.69 (93,7)	6.81 (173,0)
12.72 (323,1)	3.92 (99,6)	7.00 (177,8)
13.00 (330,2)	4.05 (102,9)	7.13 (181,1)

TYPICAL SUPERLITE 6/ST RADIAL MOUNT CALIPER, MOUNTING DIMENSIONS (SUPERLITE 6R/ST SHOWN):



DISC WIDTH	"B" MOUNT OFFSET
1.38 (35,1)	1.80 (45,7)
1.25 (31,8)	1.80 (45,7)
1.10 (27,9)	1.70 (43,2)
1.00 (25,4)	1.70 (43,2)
.81 (20,6)	1.58 (40,1)

DIMENSION "D1" = (DISC DIAMETER/2) - 1.62 (41,1)

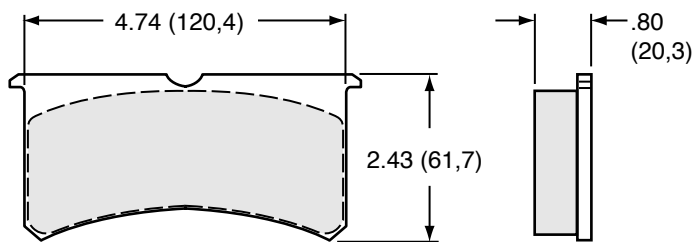
NOTE: RIGHT HAND REAR MOUNT CALIPER SHOWN. LEFT HAND CALIPER HAS BLEED SCREW AND CROSSOVER TUBE REVERSED.

INLET FITTING: 1/8-27 NPT

RADIAL MOUNT BRACKETS ARE AVAILABLE

DISC DIAMETER	"E" OUTSIDE RADIUS
11.75 (298,5)	6.65 (168,9)
12.19 (309,6)	6.81 (173,0)
12.72 (323,1)	7.00 (177,8)
12.88 (327,2)	7.07 (179,6)
13.00 (330,2)	7.13 (181,1)

TYPICAL CALIPER, TYPE 7420 PAD DIMENSIONS AND ORDERING INFORMATION:



AXLE SET PART NO.	PAD TYPE/COMPOUND
15A - 5938K	7420 A PolyMatrix
15B - 5939K	7420 B PolyMatrix
15D - 5935K	7420 D PolyMatrix
15E - 6084K	7420 E PolyMatrix
15J - 6443K	7420 J PolyMatrix
15Q - 6828K	7416 Q PolyMatrix
15Q - 6829K	7420 Q PolyMatrix
15T - 5916K	7420 T PolyMatrix

BILLET SUPERLITE 6/ST: ORDERING INFORMATION: USER SERVICEABLE COMPONENTS:

ASSEMBLY	INBOARD BODY	OUTBOARD BODY	PISTON	PAD WEAR PLATES	CROSSOVER TUBE KIT (4 PK)	BLEED SCREW KIT (4 PK)	BRIDGE BOLT KIT	SQ RING KIT (6 PK)
120-6090-FS	110-6071	110-6072	200-5403 (1.62") 200-5415 (1.12")	300-5922/23	190-5973	220-6069	230-5976	130-5972
120-6090-RS	110-6071	110-6072	200-5403 (1.62") 200-5415 (1.12")	300-5922/23	190-5973	220-6069	230-5976	130-5972
120-6091-FS	110-6073	110-6074	200-5403 (1.62") 200-5415 (1.12")	300-5922/23	190-5973	220-6069	230-5976	130-5972
120-6091-RS	110-6073	110-6074	200-5403 (1.62") 200-5415 (1.12")	300-5922/23	190-5973	220-6069	230-5976	130-5972
120-6092-FS	110-6075	110-6076	200-5403 (1.62") 200-5415 (1.12")	300-5922/23	190-5974	220-6069	230-5977	130-5972
120-6092-RS	110-6075	110-6076	200-5403 (1.62") 200-5415 (1.12")	300-5922/23	190-5974	220-6069	230-5977	130-5972
120-6093-FS	110-6077	110-6078	200-5403 (1.62") 200-5415 (1.12")	300-5922/23	190-5974	220-6069	230-5977	130-5972
120-6093-RS	110-6077	110-6078	200-5403 (1.62") 200-5415 (1.12")	300-5922/23	190-5974	220-6069	230-5977	130-5972
120-6094-FS	110-6079	110-6080	200-5403 (1.62") 200-5415 (1.12")	300-5922/23	190-5975	220-6069	230-5978	130-5972
120-6094-RS	110-6079	110-6080	200-5403 (1.62") 200-5415 (1.12")	300-5922/23	190-5975	220-6069	230-5978	130-5972
120-6095-FS	110-6081	110-6082	200-5403 (1.62") 200-5415 (1.12")	300-5922/23	190-5975	220-6069	230-5978	130-5972
120-6095-RS	110-6081	110-6082	200-5403 (1.62") 200-5415 (1.12")	300-5922/23	190-5975	220-6069	230-5978	130-5972
120-6198-SI	110-6073	110-6074-SI	200-5403 (1.62") 200-5415 (1.12")	300-5922/23	190-5973	220-6069	230-5976	130-5972
120-6199-SI	110-6081	110-6082-SI	200-5403 (1.62") 200-5415 (1.12")	300-5922/23	190-5975	220-6069	230-5978	130-5972

BILLET SUPERLITE 6R/ST: ORDERING INFORMATION: USER SERVICEABLE COMPONENTS:

ASSEMBLY	INBOARD BODY	OUTBOARD BODY	PISTON	PAD WEAR PLATES	CROSSOVER TUBE KIT (4 PK)	BLEED SCREW KIT (4 PK)	BRIDGE BOLT KIT	SQ RING KIT (6 PK)
120-6139-FS	110-6127	110-6128	200-5403 (1.62") 200-5415 (1.12")	300-5922/23	190-5973	220-6069	230-5976	130-5972
120-6139-RS	110-6127	110-6128	200-5403 (1.62") 200-5415 (1.12")	300-5922/23	190-5973	220-6069	230-5976	130-5972
120-6140-FS	110-6129	110-6130	200-5403 (1.62") 200-5415 (1.12")	300-5922/23	190-5973	220-6069	230-5976	130-5972
120-6140-RS	110-6129	110-6130	200-5403 (1.62") 200-5415 (1.12")	300-5922/23	190-5973	220-6069	230-5976	130-5972
120-6141-FS	110-6131	110-6132	200-5403 (1.62") 200-5415 (1.12")	300-5922/23	190-5974	220-6069	230-5977	130-5972
120-6141-RS	110-6131	110-6132	200-5403 (1.62") 200-5415 (1.12")	300-5922/23	190-5974	220-6069	230-5977	130-5972
120-6142-FS	110-6133	110-6134	200-5403 (1.62") 200-5415 (1.12")	300-5922/23	190-5974	220-6069	230-5977	130-5972
120-6142-RS	110-6133	110-6134	200-5403 (1.62") 200-5415 (1.12")	300-5922/23	190-5974	220-6069	230-5977	130-5972
120-6143-FS	110-6135	110-6136	200-5403 (1.62") 200-5415 (1.12")	300-5922/23	190-5975	220-6069	230-5978	130-5972
120-6143-RS	110-6135	110-6136	200-5403 (1.62") 200-5415 (1.12")	300-5922/23	190-5975	220-6069	230-5978	130-5972
120-6144-FS	110-6137	110-6138	200-5403 (1.62") 200-5415 (1.12")	300-5922/23	190-5975	220-6069	230-5978	130-5972
120-6144-RS	110-6137	110-6138	200-5403 (1.62") 200-5415 (1.12")	300-5922/23	190-5975	220-6069	230-5978	130-5972
120-6200-SI	110-6129	110-6130-SI	200-5403 (1.62") 200-5415 (1.12")	300-5922/23	190-5973	220-6069	230-5976	130-5972
120-6201-SI	110-6138	110-6139-SI	200-5403 (1.62") 200-5415 (1.12")	300-5922/23	190-5975	220-6069	230-5978	130-5972