



IR-GT4R RADIAL CALIPER

Caliper Highlights:

The **IR-GT4R** is an extremely rigid, lightweight, four piston, and radial mount design. With its smaller piston volumes and thick pad capability, the **IR-GT4R** is ideally suited for a variety of rear brake applications including super or intermediate speedways and some moderate duty short track applications.



The **IR-GT4R** body is a product of FEA design and stress analysis technology. The fully CNC machined billet body features a closed bridge with grade 8 thru-bolts. It is the perfect balance between high strength, low deflection, and overall lightweight. Each caliper is fitted with steel bridge plates to reduce wear and provide the smoothest pad operation. A center bridge bolt adds to overall caliper strength and gives easy access to the top loaded pads.

The **IR-GT4R** is available in two widths. The standard version is configured for use with 1.25" thick rotors and .80" thick 7620 style brake pads. For super speedways, the **IR-GT4R** is narrowed for use with .31" steel alloy rotors and a special .34" thick pad and spacer set. PolyMatrix pads are available in four compounds to match brake torque and heat requirement to any competition application.

Stainless steel pistons are used for their slow heat transfer properties and high corrosion resistance. Three choices for piston sizes are available to precisely balance the rear brake requirements. For extreme heat conditions, the **IR-GT4R** can be fitted with Wilwood's exclusive design **Thermlock®** pistons. **Thermlock®** pistons can reduce caliper temperatures by as much as 30%. Using EXP 600 Plus racing brake fluid will guarantee the best performance in all conditions.

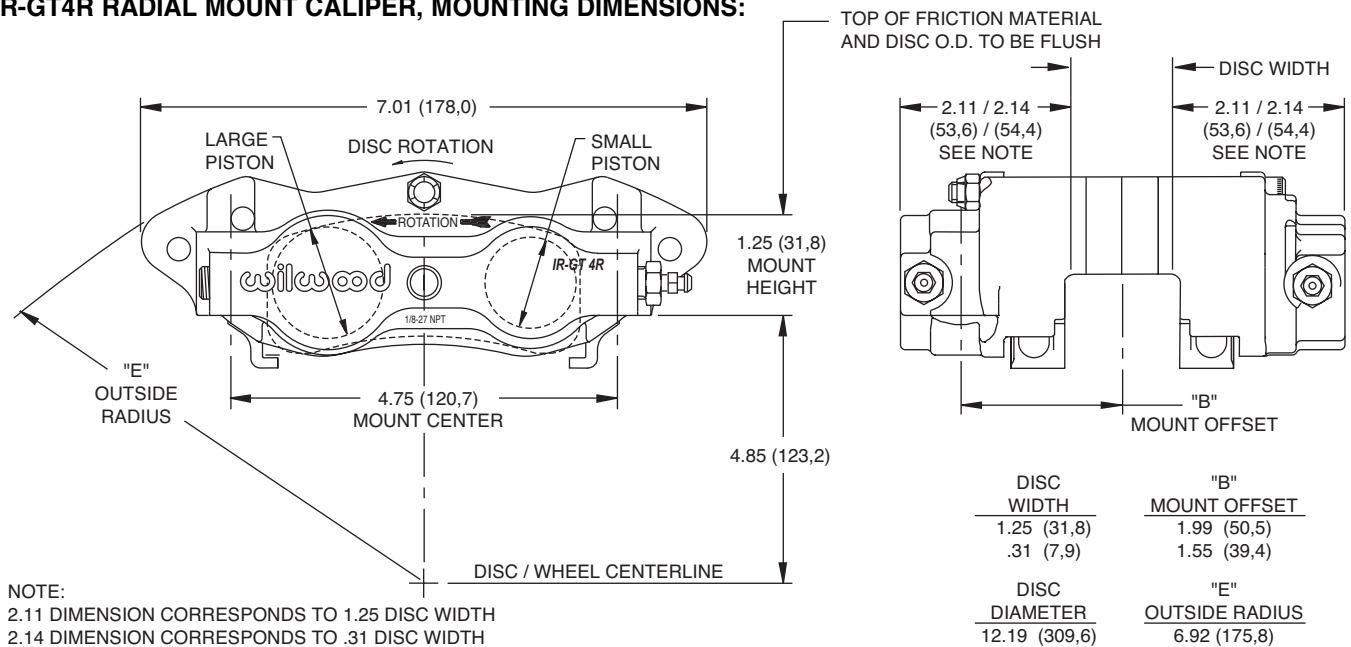
IR-GT4R bracket kits are used to install the calipers in place of most 3.5" tab mount calipers. Radial mounting simplifies service in the field and the bracket kits provide two planes of adjustment for precise alignment over the disc. The bracket kits include the radial mount bracket, studs and locknuts, and an assortment of caliper alignment shims.

CALIPER ORDERING INFORMATION:

BORE SIZE		DISC WIDTH		PART NUMBER
1.38/1.12"	35,1/28,4mm	1.25"	31,8 mm	120-6604-R
1.38/1.12"	35,1/28,4mm	1.25"	31,8 mm	120-6605-L
1.25/1.00"	31,8/25,4mm	1.25"	31,8 mm	120-6606-R
1.25/1.00"	31,8/25,4mm	1.25"	31,8 mm	120-6607-L
1.00"	25,4mm	1.25"	31,8 mm	120-6608-L/R
1.38/1.12"	35,1/28,4mm	.31"	7,9 mm	120-6619-R
1.38/1.12"	35,1/28,4mm	.31"	7,9 mm	120-6620-L
1.25/1.00"	31,8/25,4mm	.31"	7,9 mm	120-6621-R
1.25/1.00"	31,8/25,4mm	.31"	7,9 mm	120-6622-L
1.00"	25,4mm	.31"	7,9 mm	120-6623-L/R

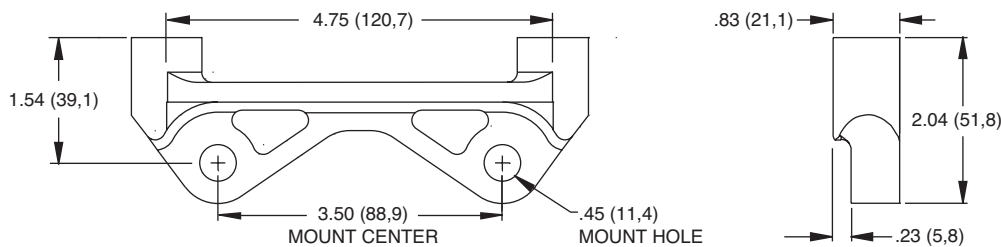
This Wilwood 3.50" radial mount bracket is also available to accompany the IR-GT4R when mounting situations warrant. Please order part number 250-6625

IR-GT4R RADIAL MOUNT CALIPER, MOUNTING DIMENSIONS:

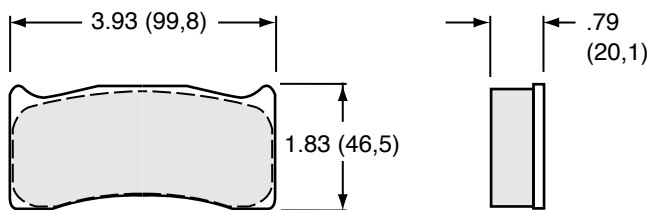


NOTE:
 2.11 DIMENSION CORRESPONDS TO 1.25 DISC WIDTH
 2.14 DIMENSION CORRESPONDS TO .31 DISC WIDTH

TYPICAL IR-GT4R RADIAL MOUNTING BRACKET, MOUNTING DIMENSIONS:



IR-GT4R RADIAL MOUNT CALIPER, TYPE 7620 PAD DIMENSIONS AND ORDERING INFORMATION:



AXLE SET PART NO.	PAD TYPE/COMPOUND
15A - 5772K	7620 A PolyMatrix
15B - 4719K	7620 B PolyMatrix
15C - 4721K	7620 C PolyMatrix
15J - 6445K	7620 J PolyMatrix
150 - 4717K	Rapco Pad (.34" Thick)

ORDERING INFORMATION; USER SERVICEABLE COMPONENTS:

ASSEMBLY	INBOARD BODY	OUTBOARD BODY	PISTON	BODY SPACER (EA)	PAD WEAR PLATE (EA)	BLEED SCREW KIT (4 PK)	1/8-27 NPT PLUG	SQ RING KIT (4 PK)	BODY SEAL
120-6604	110-6250	110-6251	200-3176 (1.38") 200-4656 (1.12")	300-4919	300-5066 (R/H) 300-5067 (L/H)	220-0627	220-0098	130-2579	210-2582
120-6605	110-6252	110-6253	200-3176 (1.38") 200-4656 (1.12")	300-4919	300-5066 (R/H) 300-5067 (L/H)	220-0627	220-0098	130-2579	210-2582
120-6606	110-6254	110-6255	200-4655 (1.25") 200-4657 (1.00")	300-4919	300-5066 (R/H) 300-5067 (L/H)	220-0627	220-0098	130-2579	210-2582
120-6607	110-6256	110-6257	200-4655 (1.25") 200-4657 (1.00")	300-4919	300-5066 (R/H) 300-5067 (L/H)	220-0627	220-0098	130-2579	210-2582
120-6608-L/R	110-6258	110-6259	200-4657 (1.00")	300-4919	300-5066 (R/H) 300-5067 (L/H)	220-0627	220-0098	130-2579	210-2582
120-6619	110-6250	110-6251	200-3176 (1.38") 200-4656 (1.12")	-	300-5066 (R/H) 300-5067 (L/H)	220-0627	220-0098	130-2579	210-2582
120-6620	110-6252	110-6253	200-3176 (1.38") 200-4656 (1.12")	-	300-5066 (R/H) 300-5067 (L/H)	220-0627	220-0098	130-2579	210-2582
120-6621	110-6254	110-6255	200-4655 (1.25") 200-4657 (1.00")	-	300-5066 (R/H) 300-5067 (L/H)	220-0627	220-0098	130-2579	210-2582
120-6622	110-6256	110-6257	200-4655 (1.25") 200-4657 (1.00")	-	300-5066 (R/H) 300-5067 (L/H)	220-0627	220-0098	130-2579	210-2582
120-6623-L/R	110-6258	110-6259	200-4657 (1.00")	-	300-5066 (R/H) 300-5067 (L/H)	220-0627	220-0098	130-2579	210-2582