

Upgrade your 70's GM street machine with 21st century braking & handling.



PN: 831-15958

Wilwood has released their new 2" drop ProSpindle for General Motors second-generation 1970-81 F-body and related 1973-76 A-body, 1975-79 X-body, and many 1977-90 B-body (originally equipped with 11" rotors) vehicles using Wilwood brakes. The high-strength cast steel ProSpindle is more rigid than OEM and eliminates the factory sliding caliper mount, allowing multiple Wilwood brake upgrades. The steering arm has also been strengthened for more

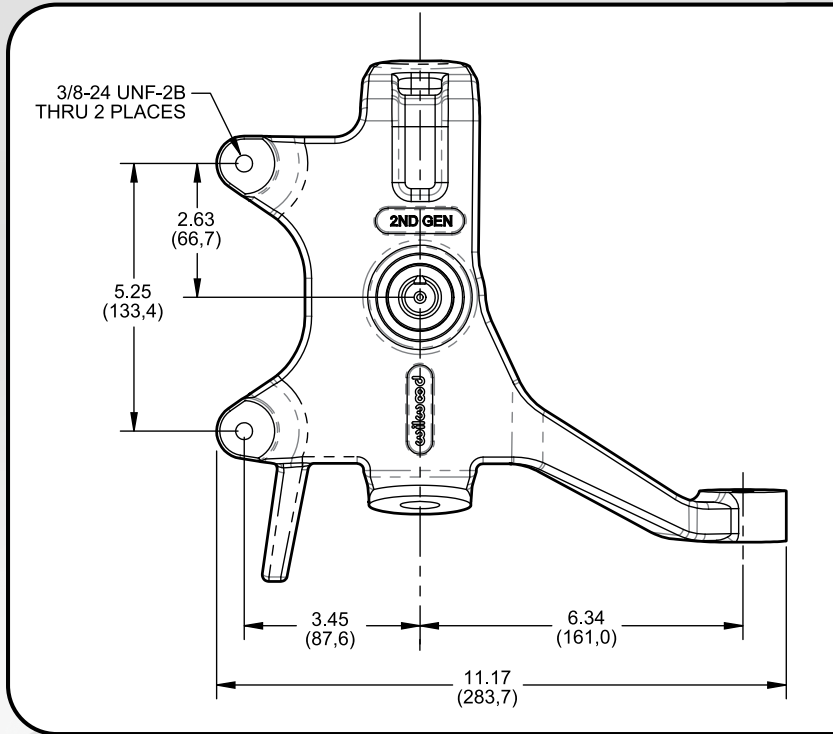
accurate steering and better handling with modern tires. Wilwood engineered the direct caliper mount to provide a fortified attachment for five new brake kits. Options include rotors ranging from 11.00" to 14.00" in diameter and high-performance four or six piston calipers. The ProSpindles mount to OE ball joints in stock or aftermarket control arms with no change to steering geometry.

For more information and list of brake kits, see page 2 & 3.

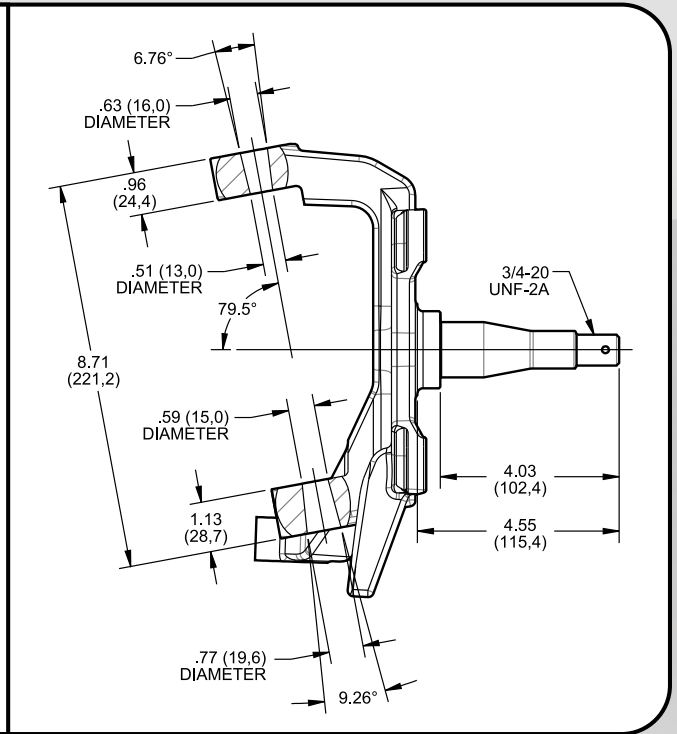
ORDERING INFORMATION: PH: 805.388.1188 • FAX: 805.388.4938 wilwood.com • info@wilwood.com

MAKE / MODEL	YEAR	MAKE / MODEL	YEAR
GM A-BODY		GM X-BODY	
Buick Century / Regal	1973-1976	Buick Apollo / Skylark	1975-1979
Chevy Chevelle / Laguna / Malibu	1973-1976	Chevy Nova	1975-1979
Chevy El Camino	1973-1976	Oldsmobile Omega	1973-1974
GMC Sprint	1973-1976	Pontiac Ventura / Phoenix	1975-1979
Oldsmobile 442 / Cutlass	1973-1976	GM B-BODY (with 11.00" OE rotors)	
Pontiac Grand Prix / Le Mans	1973-1976	Buick Electra / Le Sabre	1977-1990
GM F-BODY		Chevy Caprice / Impala	1977-1990
Chevy Camaro	1970-1981	Oldsmobile 88 / 98 / Custom Cruiser	1977-1990
Pontiac Firebird / Trans Am	1970-1981	Pontiac Bonneville / Catalina	1977-1981
		Pontiac Parisienne / Park Avenue	1977-1990

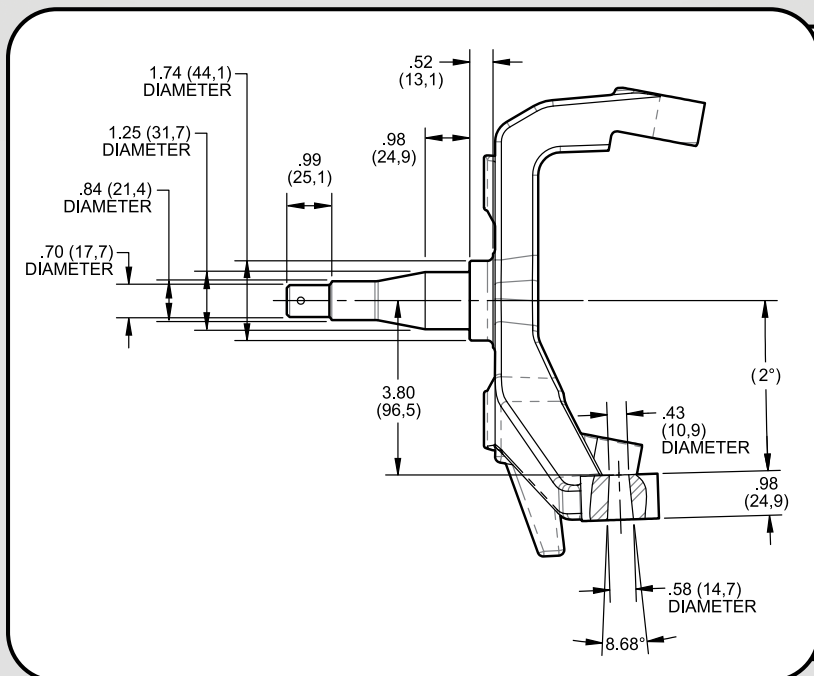
2" DROP PROSPINDLES & DISC BRAKE KITS



FRONT VIEW



LEFT SIDE VIEW



RIGHT SIDE VIEW

Wilwood's AFX 2nd Gen ProSpindle kits contain a pair of high-strength steel spindles with a more rigid steering arm, eliminating the archaic GM factory sliding caliper mount. These spindles are engineered to simplify upgrades by directly mounting Wilwood calipers and performance disc brake kits. Improve the handling and braking of 1970-1981 GM F-body, 1975-1979 X-body, 1973-76 A-body, and many 1977-90 B-body (originally equipped with 11" rotors) vehicles. A 2" drop lowers the center of gravity for less body roll and improved looks, without affecting steering geometry. Installs using OE ball joints with original or aftermarket control arms.

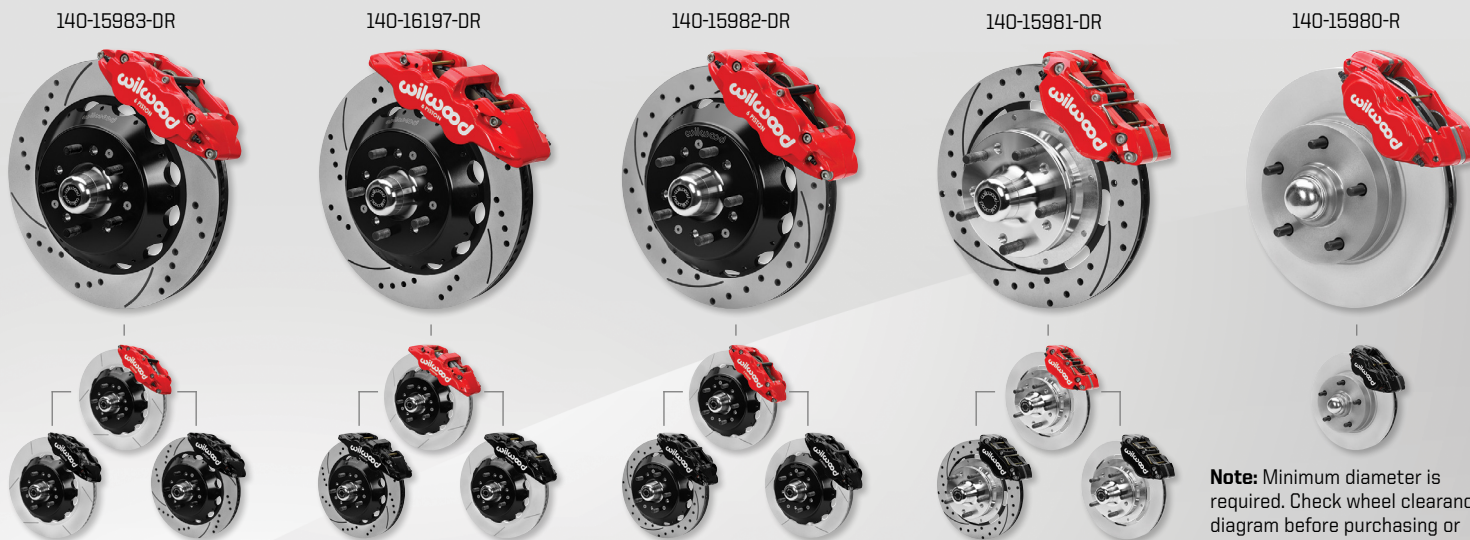
wilwood **DISC BRAKES**

2nd GEN GM - AFX

2" DROP PROSPINDLES & DISC BRAKE KITS



Brake kits for 2nd Gen GM-AFX ProSpindles



Note: Minimum diameter is required. Check wheel clearance diagram before purchasing or installing brake kits.

ORDERING INFORMATION: PH: 805.388.1188 • FAX: 805.388.4938 • wilwood.com • info@wilwood.com

PART NUMBER	DESCRIPTION	CALIPER FINISH
831-15958	2nd GEN GM - AFX ProSpindles, '70-'81 F Body, '75-'79 X Body, '73-'76 A Body, 2" Drop Spindle, LH & RH	-
140-15980	Forged Dynalite Calipers, 11.00" One Piece HP Hubs and Rotors, 0.73" Hub Offset	Black Powder Coat
140-15980-R	Forged Dynalite Calipers, 11.00" One Piece HP Hubs and Rotors, 0.73" Hub Offset	Red Powder Coat
140-15981	DynaPro 4R Calipers, 11.75" Ultralite HP Rotors, 0.64" Hub Offset	Black Powder Coat
140-15981-D	DynaPro 4R Calipers, 11.75" SRP Drilled & Slotted Rotors, 0.64" Hub Offset	Black Powder Coat
140-15981-DR	DynaPro 4R Calipers, 11.75" SRP Drilled & Slotted Rotors, 0.64" Hub Offset	Red Powder Coat
140-15981-R	DynaPro 4R Calipers, 11.75" Ultralite HP Rotors, 0.64" Hub Offset	Red Powder Coat
140-15982	Superlite 6R Calipers, 12.88" Spec37 GT Competition Series Rotors, 0.65" Hub Offset	Black Powder Coat
140-15982-D	Superlite 6R Calipers, 12.88" Spec37 SRP Drilled & Slotted Rotors, 0.65" Hub Offset	Black Powder Coat
140-15982-DR	Superlite 6R Calipers, 12.88" Spec37 SRP Drilled & Slotted Rotors, 0.65" Hub Offset	Red Powder Coat
140-15982-R	Superlite 6R Calipers, 12.88" Spec37 GT Competition Series Rotors, 0.65" Hub Offset	Red Powder Coat
140-15983	Superlite 6R Calipers, 14.00" Spec37 GT Competition Series Rotors, 0.65" Hub Offset	Black Powder Coat
140-15983-D	Superlite 6R Calipers, 14.00" Spec37 SRP Drilled & Slotted Rotors, 0.65" Hub Offset	Black Powder Coat
140-15983-DR	Superlite 6R Calipers, 14.00" Spec37 SRP Drilled & Slotted Rotors, 0.65" Hub Offset	Red Powder Coat
140-15983-R	Superlite 6R Calipers, 14.00" Spec37 GT Competition Series Rotors, 0.65" Hub Offset	Red Powder Coat
140-16197	AERO6 Calipers, 14.00" Spec37 GT Competition Series Rotors, 0.65" Hub Offset	Black Powder Coat
140-16197-D	AERO6 Calipers, 14.00" Spec37 SRP Drilled & Slotted Rotors, 0.65" Hub Offset	Black Powder Coat
140-16197-DR	AERO6 Calipers, 14.00" Spec37 GT Competition Series Rotors, 0.65" Hub Offset	Red Powder Coat
140-16197-R	AERO6 Calipers, 14.00" Spec37 SRP Drilled & Slotted Rotors, 0.65" Hub Offset	Red Powder Coat