



FORD MUSTANG

2015-2023

DYNAPRO FRONT & REAR BIG BRAKE KITS

DYNAPRO FRONT & REAR **2015-23** **FORD MUSTANG** BIG BRAKE KITS



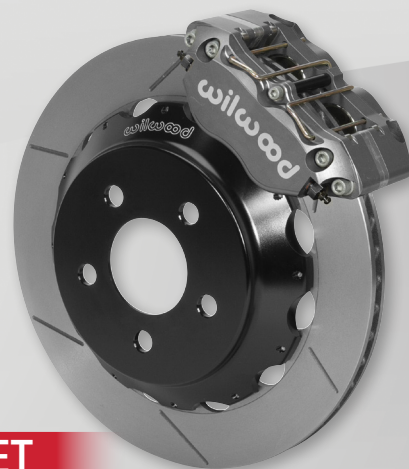
Wilwood has extended year fitment to include 2015-2023 Ford Mustangs with OE suspension uprights for **Pro Street** and **Drag Race** applications. Front and rear brake kits are engineered with race-proven **Dynapro 4R** calipers to deliver improved stopping power with substantial weight savings.

Front brake kits for **Pro Street** are paired with Wilwood's GT slotted .81" width rotors with 48 curved cooling vanes, while front and rear **Drag Race** kits use dynamically-mounted .38" width drilled steel rotors for hard stopping at the end of the strip.

KIT FEATURES:

- Radial mount caliper and bracket bolt directly to OE spindles
- T-nut mounting system on Drag Race kits allow rotor and hat to heat cycle independently of each other, extending service life

**DYNAPRO 4R Front
GT Slotted Rotor**
[P/N 140-14103](#)



PRO STREET

CALIPER: NDPR 4R

- Narrow Dynapro four piston forged aluminum caliper with superior strength and a center bridge bolt minimizing deflection
- Pure race technology in a sleek profile, weighing as little as 3.5 pounds
- Equipped with replaceable stainless steel bridge plates, extending caliper service life
- Type III hard anodized shell inside and out adds protection for longer life

ROTORS:

- Pro Street - directional 48 curved vane 12.88" x .81" GT slotted
- Drag Race - dynamic-mount drilled steel 12.90" x .38"
- Hats are lightweight aluminum, mounted with high-strength stainless steel bolts

BRAKE PADS: BP-20

- BP-20 medium friction pad with smooth engagement for street performance and track day events (other compounds available)

**DYNAPRO 4R Rear
Drilled Rotor**
[P/N 140-14106-D](#)



**DYNAPRO 4R Front
Drilled Rotor**
[P/N 140-14100-D](#)

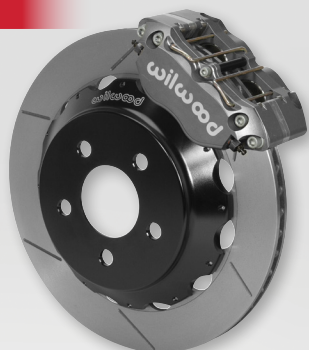
INSTALLATION PARTS:

- All premium-grade hardware included (Flexlines sold separately)

DRAG RACE

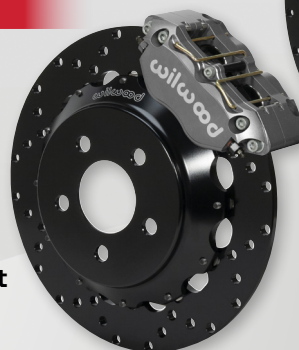
DYNAPRO FRONT & REAR 2015-23 MUSTANG BIG BRAKE KITS

PRO STREET

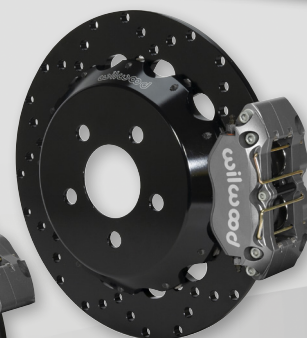


**DYNAPRO 4R Front
GT Slotted Rotor**
[P/N 140-14103](#)

DRAG RACE

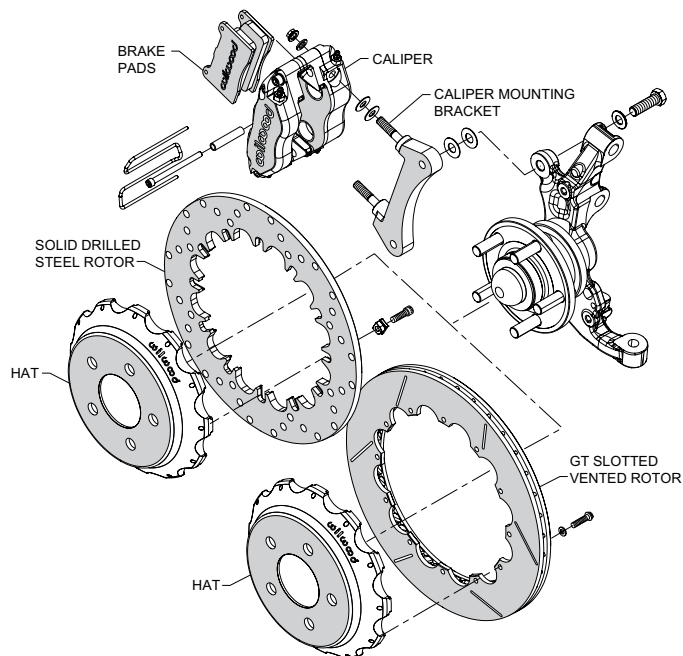


**DYNAPRO 4R Front
Drilled Rotor**
[P/N 140-14100-D](#)

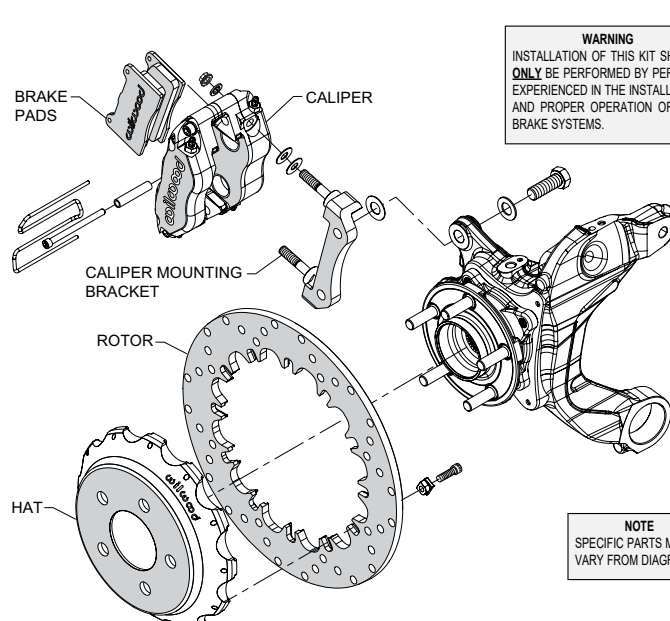


**DYNAPRO 4R Rear
Drilled Rotor**
[P/N 140-14106-D](#)

TYPICAL INSTALLATION FRONT CONFIGURATION



TYPICAL INSTALLATION REAR CONFIGURATION



WARNING
INSTALLATION OF THIS KIT SHOULD
ONLY BE PERFORMED BY PERSONS
EXPERIENCED IN THE INSTALLATION
AND PROPER OPERATION OF DISC
BRAKE SYSTEMS.

NOTE
SPECIFIC PARTS MAY
VARY FROM DIAGRAM

ORDERING INFO: PH: 805.388.1188 • FAX: 805.388.4938 • wilwood.com • info@wilwood.com

PART NUMBER	DESCRIPTION	CALIPER TYPE	CALIPER FINISH	ROTOR TYPE	ROTOR SIZE
140-14100-D	Kit, Front with DynaPro 4R, 2015-23 Mustang	DynaPro 4 Piston	Type III Hard Anodize	Drilled Dynamic Mount, Black E- Coat	12.90" x 0.38"
140-14103	Kit, Front with DynaPro 4R, 2015-23 Mustang	DynaPro 4 Piston	Type III Hard Anodize	GT Slotted	12.88" x 0.81"
140-14106-D	Kit, Rear with DynaPro 4R, 2015-23 Mustang	DynaPro 4 Piston	Type III Hard Anodize	Drilled Dynamic Mount, Black E- Coat	12.90" x 0.38"
220-13912	Flexline Kit, Front Braided Stainless Steel, 2015-23 Mustang				
220-13913	Flexline Kit, Rear Braided Stainless Steel, 2015-23 Mustang				