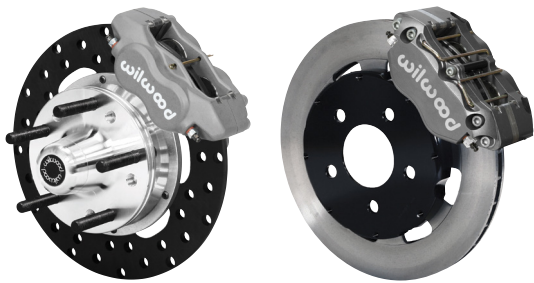


DRAG RACE FRONT BRAKE KITS

Front drag race kits deliver high-response braking, emphasizing low drag, lightweight, and durability for race cars using OE spindles and popular rear axles.

- Two or four piston single caliper kits
- Vented iron, drilled steel or SA rotors
- Options for floating rotors on most kits



DRAG RACE REAR BRAKE KITS

Rear drag race kits deliver high-response braking, emphasizing low drag, lightweight, and durability for race cars using OE spindles and popular rear axles.

- Two or four piston single and dual-caliper kits
- Vented iron, drilled steel or SA rotors
- Options for floating rotors on most kits



PROSPINDLES

The widespread use of the 1974-'78 Mustang II suspension platform led to the development of these superior strength forged steel spindles.

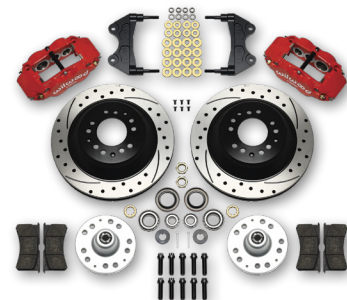
- 3X stronger than standard cast spindles
- Tall-body design for better geometry
- Fortified caliper mount bosses
- Available in stock height or 2" drop
- Direct-fit, bolt-in replacement for OE



PROSPINDLE FRONT BRAKE KITS

Brake kits for ProSpindles include the unique mount brackets necessary to securely attach the calipers to the fortified ProSpindle body.

- 14 kit models available
- Rotor diameter options from 11.00" to 15.00"
- Four and six piston calipers



SPECIAL APPLICATION BRAKES

Wilwood offers special services to help you select one of our many powder-coated caliper colors or the proper track-fortified kit for OE or aftermarket spindles and rear axle flanges. Contact our tech support line for assistance.



OE-FIT REPLACEMENT CALIPERS

Wilwood's D11 four piston calipers are a direct bolt-on replacement for the original equipment Kelsey-Hayes calipers on all 1965-67 Ford Mustang, Fairlane, Ranchero, Falcon, Comet, and Mercury Cougar.



MASTER CYLINDERS AND CONTROLS

Tandem master cylinders and bias controls will fine-tune the brake performance on all manual or vacuum boost power systems.



PERFORMANCE BRAKE PADS

Wilwood offers multiple brake pad compounds for most applications, from street performance to extreme racing. Our website provides detailed information on each compound, and you can also call our tech support line for help.



BRAKE FLUIDS & BRAKE BOTTLES

Wilwood brake fluids have been proven over decades in high-performance applications to maintain firm pedal feel and quick response.



wilwood

MUSTANG BUYERS GUIDE FOR STREET & TRACK

- Big Brake Upgrade Kits
- Drum-to-Disc Conversions
- Direct-Mount Calipers
- OE-Fit Pads



GEN 1 1965 - 1973

GEN 2 1974 - 1978

GEN 3 1979 - 1993

GEN 4 1994 - 2004

GEN 5 2005 - 2014

GEN 6 2015 - 2021



4700 Calle Bolero, Camarillo, CA 93012
(805) 388-1188 | wilwood.com

Follow us on:



PN QF-MUSTANG REV 0225

wilwood

1965 » 2021 MUSTANG PRODUCT GUIDE



CLASSIC SERIES FRONT BRAKES

One-piece cast rotor assemblies and four piston calipers mount to the stock drum or disc brake spindles on classic-era V8 cars with 5-lug wheels.

- Dynalite-M four piston aluminum calipers
- Smooth or SRP drilled 11.30" diameter rotors
- Fits most factory 14" disc brake wheels



GEN 1 '65-'73



DYNAPRO 6A FRONT BRAKES

Get big-brake stopping power and high-tech style to complement wheel and tire upgrades on your custom show or performance street machine.

- DynaPro 6A six piston forged billet calipers
- 12.19" diameter vented smooth or drilled rotors
- Mounts direct to the OE '65-'78 spindle



GEN 1 '65-'73

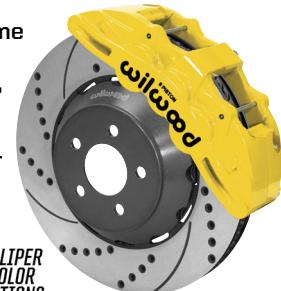
GEN 2 '74-'78



SX6R FRONT BRAKES

It is the largest dual-purpose caliper Wilwood has produced, providing big-brake performance for show and dual-purpose street and track vehicles.

- Dual-purpose Speed Xtreme SX6R six piston calipers
- Choice of 14.00" or 15.00" diameter rotors
- Dynamic mount slotted or drilled and slotted two-piece rotors



GEN 6 '15-'21



PRO SERIES FRONT BRAKES

A complete front hub, rotor and caliper kit. Ideal for drum-to-disc conversions on street or show custom applications, or as a lighter-weight alternative to stock for the drag strip.

- Dynalite or DynaPro four piston calipers
- Forged aluminum Pro Series hub assemblies
- Rotor diameter options from 11.00" to 12.19"

GEN 1 '65-'73

GEN 2 '74-'78

GEN 3 '79-'93



PRO SERIES REAR BRAKES

Convert your rear stock axle from drums to discs with four piston calipers and an internal parking brake on all types of high-performance street or show customs.

- Forged DynaPro LP or Dynalite calipers
- Choice of 12.19" or 14.00" diameter rotors
- EPB options available for some flange & axle offsets



SUPERLITE FRONT BRAKES

Two-piece rotor assemblies use aluminum hats to mount big brake rotors to the OE hubs.

- Superlite 6R six piston calipers
- Built for 17" and larger wheels
- For traditional non-ABS spindles
- Choice of 12.88" or 14.00" diameter rotors

GEN 1 '65-'73

GEN 2 '74-'78

GEN 4 '94-'04

GEN 5 '05-'14



SUPERLITE REAR BRAKES

Complement your front brake upgrade with matched style and performance using these rear big brake kits with options for the street and dedicated track cars.

- Superlite 4R or 4R/ST four piston calipers
- Choice of 12.88" or 14.00" rotors
- Street kits retain the OE parking brakes



AEROLITE FRONT BRAKES

Large calipers and rotors create tremendous stopping power in big style for all types of show, custom and dual-sport street and track applications.

- Aerolite 6R six piston calipers
- Full OE equipment compatibility
- Rotor diameter options from 14.00" to 15.00"

GEN 4 '94-'04

GEN 5 '05-'14

GEN 6 '15-'21



For Wilwood ProSpindles



AEROLITE REAR BRAKES

Complement your Aerolite front brake upgrade with a style and performance-matched Aerolite 4R rear kit using the factory parking brake.

- Aerolite 4R four piston calipers
- Two-piece, 14.00" diameter rotors
- Full OE system compatibility
- MC4 options available for some flange & axle offsets

GEN 5 '05-'14

GEN 6 '15-'21



SUPERLITE ROAD RACE BRAKES

Superlite 4R/ST road race kits are configured for dedicated road racing, delivering high-performance durability in a lightweight package.

- FSL4R/ST calipers with Thermlock® heat shield pistons
- High-cooling GT slotted, 48 curved vane **Spec37** rotors

GEN 4 '94-'04

GEN 5 '05-'14

GEN 6 '15-'21



AEROLITE ROAD RACE KITS

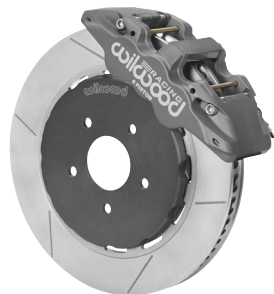
Aerolite 6R/ST road race kits deliver championship performance and unyielding durability in all levels of club and professional motorsports competition.

- AER06R/ST calipers with Thermlock® heat shield pistons
- GT slotted dynamic Lug-Drive **Spec37** rotors with 72 high-cooling vanes

GEN 4 '94-'04

GEN 5 '05-'14

GEN 6 '15-'21



GN4R ROAD RACE KITS

Grand National GN4R/ST big brake kits provide strong forged aluminum calipers in the ultimate road race competition package restricted to four pistons.

- GN4R/ST calipers with Thermlock® heat shield pistons
- Wilwood's dynamic Lug-Drive floating rotor technology
- High-cooling 48 curved vane **Spec37** alloy rotors

GEN 5 '05-'14

